

Appendix 8

Air Quality Impact Assessment

**SECTION 12A APPLICATION FOR
AMENDMENT TO THE APPROVED KWAI
CHUNG OUTLINE ZONING PLAN NO. S/KC/32
TO REZONE THE APPLICATION SITE FROM
“OTHER SPECIFIED USES” ANNOTATED
“BUSINESS” TO “RESIDENTIAL (GROUP E) 2”,
LOT 316 IN D.D. 444 AND KWAI CHUNG TOWN
LOT (KTCL) 146, 97-107 WO YI HOP ROAD,
NEW TERRITORIES**

AIR QUALITY IMPACT ASSESSMENT REPORT

Jul 2024

Report No.: RT23055-AQIA-03

Prepared By:



BeeXergy Consulting Limited (BXG)

Phone: (852) 3568-4701

Address: Unit 2501, 2503 & 2504,
25/F, AIA Financial Centre,
712 Prince Edward Road East,
Kowloon, Hong Kong

Email: info@beexergy.com



Project:	SECTION 12A APPLICATION FOR AMENDMENT TO THE APPROVED KWAI CHUNG OUTLINE ZONING PLAN NO. S/KC/32 TO REZONE THE APPLICATION SITE FROM “OTHER SPECIFIED USES” ANNOTATED “BUSINESS” TO “RESIDENTIAL (GROUP E) 2”, LOT 316 IN D.D. 444 AND KWAI CHUNG TOWN LOT (KTCL) 146, 97-107 WO YI HOP ROAD, NEW TERRITORIES AIR QUALITY IMPACT ASSESSMENT				
Report No.:	RT23055-AQIA-03				
Revision	Issue Date	Description	Author	Checker	Approver
0	18/03/2024	Issued for Comment	KCC	ZC	HM
1	08/04/2024	Issued for Comment	LY	YS	HM
2	09/05/2025	Revised Version	LY	YS	HM
3	29/07/2025	Revised Version	LY	YS	HM

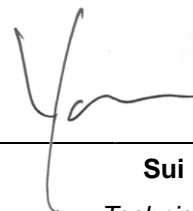
Prepared By:



Leo Yu

Consultant

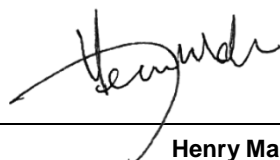
Checked by



Sui Hang Yan

Technical Director

Approved by:



Henry Mak

Director

Disclaimer:

- This report is prepared and submitted by BeeXergy Consulting Limited with all reasonable skill to the best of our knowledge, incorporating our Terms and Conditions and taking account of the resources devoted to it by agreement with the client.
- We disclaim any responsibility to the client and others in respect of any matters outside the project scope.
- This report is confidential to the client and we accept no responsibility of whatsoever nature to third parties to whom this report, or any part thereof, is made known. Any such party relies upon the report at their own risk.

TABLE OF CONTENT

1.	INTRODUCTION.....	1
1.1.	BACKGROUND.....	1
1.2.	PROJECT LOCATION.....	1
1.3.	PROJECT DESCRIPTION.....	1
1.4.	STRUCTURE OF THE REPORT.....	2
2.	RELEVANT LEGISLATION, STANDARDS, GUIDELINES, AND BASELINE CONDITIONS	3
2.1.	INTRODUCTION.....	3
2.2.	RELEVANT LEGISLATION, STANDARDS AND GUIDELINES.....	3
2.3.	AIR QUALITY OBJECTIVES	3
2.4.	HONG KONG PLANNING STANDARDS AND GUIDELINES	4
2.5.	BASELINE CONDITIONS.....	6
3.	CONSTRUCTION PHASE AIR QUALITY IMPACT ASSESSMENT	11
3.1.	INTRODUCTION.....	11
3.2.	IDENTIFICATION OF AIR QUALITY IMPACT.....	11
3.3.	EVALUATION OF AIR QUALITY IMPACT.....	11
3.4.	RECOMMENDED MITIGATION MEASURES.....	12
4.	OPERATION PHASE AIR QUALITY IMPACT ASSESSMENT	14
4.1.	INTRODUCTION.....	14
4.2.	IDENTIFICATION OF AIR QUALITY IMPACT.....	14
4.3.	EVALUATION OF AIR QUALITY IMPACT.....	14
4.4.	RECOMMENDED MITIGATION MEASURES.....	16
5.	CONCLUSION	17

FIGURES

Figure 1.1	Location of Application Site and Its Environs
Figure 2.1	200m and 500m Assessment Area
Figure 2.2	PATH Grids covered the 500m Assessment Area
Figure 2.3	Location of Representative Air Sensitive Receivers (ASRs)
Figure 2.4	Location of Industrial Chimneys and Refuse Collection Points
Figure 4.1	10m Buffer Zone for District Distributor
Figure 4.2	100m Buffer Zone for Industrial Chimneys at GDS Data Centre

APPENDICES

Appendix 1.1	Master Layout Plan
Appendix 2.1	Site Survey Record
Appendix 2.2	Information of Specified Process License L-7-065(1)
Appendix 4.2	Extract of Traffic Census 2022

1. INTRODUCTION

1.1. BACKGROUND

- 1.1.1. Lai Sun Textiles Co. Ltd. (Project Proponent) proposed to rezone the Application Site from “Other Specified Uses” annotated “Business” to Residential (Group E) 2”, at Lot 316 in D.D. 444 and Kwai Chung Town Lot (KTCL) 146, 97-107 Wo Yi Hop Road, New Territories (hereafter refer to “the Proposed Development”).
- 1.1.2. BeeXergy Consulting Limited was commissioned by the Project Proponent to undertake an Air Quality Impact Assessment (AQIA) supporting its planning application under Section 12A of the Town Planning Ordinance (TPO) for the Proposed Development.

1.2. PROJECT LOCATION

- 1.2.1. The Application Site is located in Kwai Chung District, with a site area of approximately 2,764.8m². It is currently bounded by industrial buildings to the north and west, Wo Yi Hop Road to the east, and an office building to the south. The Application Site is currently zoned as “Other Specified Uses” annotated “Business” under the Approved Kwai Chung Outline Zoning Plan No. S/KC/32. **Figure 1.1** showed the location of Application Site and its environs.

1.3. PROJECT DESCRIPTION

- 1.3.1. The Proposed Development will convert the existing permitted uses to Residential Care Home for Persons with Disabilities (RCHD), Residential Care Home for the Elderly (RCHE), flats. The key development parameters were summarised in **Table 1.1** and the Master Layout Plan provided by the Index Architecture Limited (the Project Architect) was enclosed in **Appendix 1.1**.

Table 1.1 Key Development Parameters of the Proposed Development

No. of Storeys	28 (excluding the basement floors)
Gross Floor Area (GFA)	Total: 16,589m ² Flat: 16,458m ² (excluding clubhouse area) Shop and Services: 131m ² RCHD and/or RCHE: not more than 12,000m ²
Building Height	Not more than +130 mPD (87.6 m)
Proposed Floor Use	B1/F to LG1/F: Carpark

Proposed Floor Use	G/F: Shared Use 1/F to 3/F: RCHD 4/F to 6/F: RCHE 7/F to 26/F: Flats
No. of Parking Spaces	74
Tentative Population Intake Year	2030
Proposed RCHD and/or RCHE	
Total No. of Beds	Within a range of 280-380
Proposed Flats	
Total No. of Flats	253

1.4. STRUCTURE OF THE REPORT

1.4.1. This AQIA Report includes the following sections:

- Section 1 introduced the project background;
- Section 2 presented the relevant legislation, standards, guidelines, and baseline conditions for this AQIA;
- Section 3 identified and evaluated the air quality impact associated with the Construction of the Proposed Development;
- Section 4 identified and evaluated the air quality impact associated with the Operation of the Proposed Development; and
- Section 5 summarized the conclusion of this AQIA.

2. RELEVANT LEGISLATION, STANDARDS, GUIDELINES, AND BASELINE CONDITIONS

2.1. INTRODUCTION

- 2.1.1. This section outlined the relevant legislation, standards, guidelines, and baseline conditions for this AQIA.
- 2.1.2. This AQIA considered surrounding industrial emissions from chimneys and vehicular emissions within the 500m assessment area and odour emissions within the 200m assessment area. The 200m and 500m assessment area of the Project Site were shown in **Figure 2.1**.

2.2. RELEVANT LEGISLATION, STANDARDS AND GUIDELINES

- 2.2.1. The relevant legislation, standards, and guidelines applicable to the present review of air quality impact include:
- Air Pollution Control Ordinance (APCO) (Cap. 311);
 - Air Pollution Control (Smoke) Regulations (Cap. 311C);
 - Air Pollution Control (Fuel Restriction) Regulations (Cap. 311I);
 - Air Pollution Control (Construction Dust) Regulation (Cap. 311R);
 - Air Pollution Control (Non-road Mobile Machinery) (Emission) Regulation (Cap. 311Z);
 - Cap. 611 Motor Vehicle Idling (Fixed Penalty) Ordinance;
 - Hong Kong Planning Standards and Guidelines (HKPSG);
 - ProPECC PN 2/96 “Control of Air Pollution in Car Parks”; and
 - Environmental Protection Department (EPD)’s Guideline “Control of Oily Fume and Cooking Odour from Restaurants and Food Business”.

2.3. AIR QUALITY OBJECTIVES

- 2.3.1. The APCO provides a statutory framework for establishing the Air Quality Objectives (AQOs) and stipulating the preventative/mitigation measures for air pollution sources. The AQOs stipulate concentration for a range of pollutants, which were summarized below in **Table 2.1**.

Table 2.1 Hong Kong Air Quality Objectives

Pollutant	Averaging Time	Concentration Limit ^[i] (µg/m ³)	Number of Exceedances Allowed
Sulphur Dioxide (SO ₂)	10-minute	500	3
	24-hour	50	3
Respirable Suspended Particulates (RSP) ^[ii]	24-hour	100	9
	Annual	50	N/A
Fine Suspended Particulates (FSP) ^[iii]	24-hour	50	35
	Annual	25	N/A
Nitrogen Dioxide (NO ₂)	1-hour	200	18
	Annual	40	N/A
Ozone (O ₃)	8-hour	160	9
Carbon Monoxide (CO)	1-hour	30,000	0
	8-hour	10,000	0
Lead	Annual	0.5	N/A
Notes: [i] All measurements of the concentration of gaseous air pollutants, i.e., SO ₂ , NO ₂ , O ₃ , and CO, are to be adjusted to a reference temperature of 293 K and a reference pressure of 101.325 kPa. [ii] RSP means suspended particles in air with a nominal aerodynamic diameter of 10µm or less. [iii] FSP means suspended particles in air with a nominal aerodynamic diameter of 2.5µm or less.			

2.4. HONG KONG PLANNING STANDARDS AND GUIDELINES

2.4.1. Environmental requirements to be considered in land use planning are outlined in Chapter 9 of the HKPSG. The standards and guidelines provide recommendations on suitable locations for developments and sensitive users, provision of environmental facilities and design, layout, phasing, and operational controls to minimize adverse environmental impacts. It also lists out environmental factors influencing land use planning and recommends buffer distances for land uses.

2.4.2. Buffer distances on usage of open space sites for active and passive recreational uses are also recommended. Evaluation of the potential air quality impact on the Proposed Development due to the open road emissions and industrial emissions shall refer to the guidelines as stipulated in the HKPSG. The buffer distance requirements in HKPSG were extracted below in **Table 2.2**.

Table 2.2 HKPSG Recommended Buffer Distance

Pollution Source	Parameter	Buffer Distance	Permitted Uses
Roads and Highways	Type of Road		
	Trunk Road and Primary Distributor	> 20m	Active and Passive Recreational Uses
		3 – 20m	Passive Recreational Uses
		< 3m	Amenity Areas
	District Distributor	> 10m	Active and Passive Recreational Uses
		< 10m	Passive Recreational Uses
Roads and Highways	Local Distributor	> 5m	Active and Passive Recreational Uses
		< 5m	Passive Recreational Uses
	Under Flyover	N/A	Passive Recreational Uses
Industrial Areas	Difference in Height between Industrial Chimney Exit and the Site		
	< 20m	> 200m	Active and Passive Recreational Uses
	20 – 30m ^(*)	> 100m	Active and Passive Recreational Uses
		5 – 200m	Passive Recreational Uses
	30 – 40m	> 50m	Active and Passive Recreational Uses
		5 – 100m	Passive Recreational Uses
	> 40m	5 – 50m	Passive Recreational Uses
		> 10m	Active and Passive Recreational Uses
Remarks:			
a) In situations where the height of chimneys is not known, use the set of guidelines marked with an asterisk for preliminary planning purpose and refine as and when more information is available.			
b) The buffer distance is the horizontal, shortest distance from the boundary of the industrial lot, the position of existing chimneys or the edge of road kerb, to the boundary of open space sites.			
c) The guidelines are generally applicable to major industrial areas but not individual large industrial establishments which are likely to be significant air pollution sources. Consult EPD when planning open space sites close to such establishments.			
d) Amenity areas are permitted in any situation.			

2.4.3. Some small-scale community uses (i.e. crematoria, livestock yards, stock wagon washing areas, and wholesale fish and poultry markets) can cause significant air pollution nuisance primarily due to odour. Usually, a buffer distance of at least 200m from nearby sensitive uses is required.

2.5. BASELINE CONDITIONS

Existing Ambient Air Quality

2.5.1. The nearest EPD General Air Quality Monitoring Station (AQMS) to the Application Site is the Kwai Chung AQMS located at Kwai Chung Police Station, which is approximately 1.6km to the Southwest of the Application Site. The concentrations of the key air pollutants relevant to the Project in the recent five years (2018 – 2022) at Kwai Chung AQMS extracted from EPD's Smart Air Modelling Platform (SAMP) were summarized in **Table 2.3**, which depicted the trend in ambient air quality.

Table 2.3 Air Quality Monitoring Data at Kwai Chung General AQMS Station

Pollutant	Averaging Time	Concentration ($\mu\text{g}/\text{m}^3$) ^{[1], [2]}					Prevailing AQOs ($\mu\text{g}/\text{m}^3$)
		2018	2019	2020	2021	2022	
NO ₂	1-hour (19 th highest)	196	184	184	180	168	200
	Annual	<u>55</u>	<u>54</u>	<u>48</u>	<u>52</u>	<u>44</u>	40
SO ₂	10-min (4 th highest)	134	53	43	45	59	500
	24-hour (4 th highest)	27	18	12	14	17	50
RSP	24-hour (10 th highest)	62	59	46	56	53	100
	Annual	32	29	23	26	23	50
FSP	24-hour (36 th highest)	30	29	24	27	28	50
	Annual	20	18	14	16	15	25
O ₃	8-hour (10 th highest)	133	143	124	124	139	160
Notes: [1] Underlined and bolded figures indicate the exceedance recorded. [2] CO not being monitored at Kwai Chung General AQMS Station.							

2.5.2. As shown in **Table 2.3**, the monitored air pollutant concentrations from 2018 to 2022 could comply with the prevailing AQOs except for the annual NO₂ concentrations from 2018 to 2022.

Predicted Background Air Quality

2.5.3. Apart from the air quality monitoring data, EPD also provides a set of regional background concentrations for key pollutants in the “Pollutants in the Atmosphere and their Transport over Hong Kong” (PATH) model v3.0. Given that the tentative intake year of the Proposed Development would be in the Year 2030, the background air quality predicted by PATH v3.0 for Year 2030 was presented as the future background air quality during the operation phase.

2.5.4. The 500m assessment area was covered by the PATH grids (36, 39), (37, 39), (36, 38), and (37, 38) as shown in **Figure 2.2**. The predicted background concentrations at the PATH grids in Year 2030 were summarized in **Table 2.4**. The predicted background concentrations in the Year 2030 were expected to be lower than their respective AQOs except Ozone.

Table 2.4 Background Air Pollutant Concentrations Predicted in Year 2030

Pollutant	Averaging Time	PATH Grid (36, 39)	PATH Grid (37, 39)	PATH Grid (36, 38)	PATH Grid (37, 38)	Prevailing AQOs
		Concentration (µg/m ³) ^[1]				
NO ₂	1-hour (19 th highest)	83	74	89	79	200
	Annual	16	14	17	14	40
SO ₂	10-min (4 th highest)	22	22	22	22	500
	24-hour (4 th highest)	6	6	7	6	50
RSP	24-hour (10 th highest)	48	49	49	49	100
	Annual	19	19	19	19	50
FSP	24-hour (36 th highest)	24	25	25	25	50
	Annual	11	11	12	11	25
O ₃	8-hour (10 th highest)	<u>168</u>	<u>166</u>	<u>168</u>	<u>168</u>	160
CO	1-hour (1 st highest)	519	509	517	508	30,000
	8-hour (1 st highest)	487	480	487	480	10,000
Notes:						
[1] Underlined and bolded figures indicate the exceedance recorded.						

Air Quality Sensitive Receivers (ASRs)

2.5.5. Representative ASRs within 500m assessment area were identified based on topographic maps supplemented by site surveys, outline zoning plans and other published plans in the vicinity of the Application Site. Within the 500m assessment area, ASRs that are closest to the Application Site are anticipated to be the most affected and therefore considered the most representative ASRs for the worst-case scenario air quality impact assessment, whilst other ASRs located further away from these first-tier representative ASRs are expected to be less impacted. Details of the identified representative ASRs were summarized in **Table 2.5** below and their locations were shown in **Figure 2.3**.

Table 2.5 Summary of Identified Representative ASRs

ASR ID	Description of ASR	Separation Distance from the Application Site
ASR01	Industrial Development to the North of the Application Site	<5m
ASR02	Residential and Commercial Development to the East of the Application Site	~20m
ASR03	Industrial Development to the South of the Application Site	<5m
ASR04	Industrial Development to the West of the Application Site	~3m

Site Surveys

2.5.6. Site surveys were conducted on 11 December 2023, 3 January 2024 and 20 February 2025 to identify any industrial emissions and odour emission within the 500m and 200m assessment area. A total of Twenty-eight (28) industrial chimneys were identified within the 500m assessment area. **Table 2.6** below summarized the industrial chimneys identified. The location of the identified industrial chimneys was shown in **Figure 2.4**. Details of the site survey record were shown in **Appendix 2.1**

Table 2.6 Summary of Industrial Chimneys Identified During the Site Surveys

Chimney ID	Location	Closest Distance to the Application Site	Current Chimney Status	Difference in Height between Industrial Chimney Exit and the ASR	Buffer Distance required in HKPSG	Compliance with HKPSG
GSB_01-03	Golden Sunflower Building	~52m	Abandoned	41m	100m	N/A
GDS_01-21	GDS Data Centre	~106m	Emergency	29m	100m	Yes
GIB_01	Grand Industrial Building	~306m	Active	53m	100m	Yes
TCSCC_01-03	Tung Chun Soy and Canning Company	~357m	Active	90m	100m	Yes
VIB_01	Vigor Industrial Building	~264m	Active	19m	100m	Yes
PDC_01	Proposed Data Centre	~307m	Emergency	<5m	100m	Yes
PDC_02	Proposed Data Centre	~219m	Emergency	<5m	100m	Yes

- 2.5.7. Three (3) industrial chimneys (**Photo 1** in **Appendix 2.1**) were identified at the Golden Sunflower Building (GSB_01-03) located approximately 44m away from the Application Site. Based on the site survey record, the industrial chimneys were abandoned and no longer being used during the time of the site survey (**Photos 2 to 3** in **Appendix 2.1**).
- 2.5.8. Twenty-one (21) industrial chimneys (GDS_01-21) were identified at the GDS Data Centre. The chimney GDS_01 (**Photos 4** in **Appendix 2.1**) is located the closest, which is approximately 106m away from the Application Site. The chimneys would only be used for emergency power generation for the Data Centre according to Specified Process License L-7-065(1). Detail of the Specified Process License L-7-065(1) was shown in **Appendix 2.2**.
- 2.5.9. One (1) industrial chimney (**Photo 7** in **Appendix 2.1**) was identified at the Grand Industrial Building (GIB_01) and three (3) industrial chimneys (**Photo 8** in **Appendix 2.1**) were identified at the Tung Chun Soy Sauce and Canning Company (TCSCC_01-03). The above-mentioned chimneys are located over 300m away from the Application Site and were in operation during the time of the site survey.

2.5.10. In addition, there were potential chimneys for Ngan Fai Laundry Limited at Vigor Industrial Building. However, the distance between the Proposed Development and Vigor Industrial Building was greater than 200m, which is greater than the buffer distance required in HKPSG, thus Vigor Industrial Building is not considered in this assessment.

2.5.11. Two (2) approved S16 Application for data centre near Tai Yuen Street and Ta Chuen Ping Street are identified within assessment. Potential planned chimneys at data centre may lead to adverse air quality impact. Given that chimneys at data center would likely be used for emergency power generation, no adverse air quality impact on Proposed Development is anticipated.

2.5.12. During the site survey, the presence of other potential air pollution sources and dusty uses within the assessment area such as concrete batching plants, tunnel portals and ventilation buildings has been assessed, no additional air pollution sources are identified.

3. CONSTRUCTION PHASE AIR QUALITY IMPACT ASSESSMENT

3.1. INTRODUCTION

3.1.1. This section identified potential impacts on air quality associated with the construction of the Proposed Development.

3.2. IDENTIFICATION OF AIR QUALITY IMPACT

3.2.1. Based on the nature of the Proposed Development, the potential air quality impacts due to the construction of the Proposed Development were identified below:

- Fugitive Dust Emissions from Demolition and Construction; and
- Gaseous Emissions from the Operation of Powered Mechanical Equipment (PMEs).

3.3. EVALUATION OF AIR QUALITY IMPACT

Fugitive Dust Emissions from Demolition and Construction

3.3.1. Fugitive dust emissions were expected to be generated from various construction activities during demolition, site formation, foundation, and superstructure works.

3.3.2. Mitigation measures set out under the *Air Pollution Control (Construction Dust) Regulation* shall be strictly followed during the demolition, site formation, foundation, and superstructure works. With the proper implementation of dust mitigation measures, no adverse impact associated with the fugitive dust generated from construction is anticipated. Details of recommended mitigation measures were provided in **Section 3.4** below.

Gaseous Emissions from the Operation of PMEs

3.3.3. Gaseous emissions are expected to be generated from the operation of PMEs such as Generators, Excavators, and Dump Trucks.

3.3.4. On average 5 nos. of PMEs will be operated simultaneously within the Application Site. Gaseous emissions from PMEs are expected to be limited. Provided that the *Air Pollution Control (Fuel Restriction) Regulation*, *Air Pollution Control (Non-road Mobile Machinery) (Emission) Regulation*, and *Motor Vehicle Idling (Fixed Penalty) Ordinance* shall be followed, no adverse air quality impacts associated with gaseous emission from the operation of PMEs is anticipated. Details of recommended mitigation measures were provided in **Section 3.4** below.

3.4. RECOMMENDED MITIGATION MEASURES

3.4.1. The following air quality mitigation measures are recommended for the construction phase of the Proposed Development:

- The works area for site clearance/demolition should be sprayed with water or a dust suppression chemical before, during and after the operation so as to maintain the entire surface wet;
- For any wall of the building to be demolished that abuts or fronts upon a street, service lane or other open area accessible to the public, impervious dust screens or sheeting should be used to enclose the whole wall to a height of at least 1 m higher than the highest level of the structure being demolished;
- Erection of hoarding of not less than 2.4m high from ground level along the site boundary, where appropriate;
- Any stockpile of dusty materials should be covered entirely by impervious sheeting and/or placed in an area sheltered on the top and four sides;
- Restricting heights from which materials are to be dropped, as far as practicable to minimize the fugitive dust arising from unloading/ loading;
- All dusty materials should be sprayed with water immediately prior to any loading, unloading or transfer operation so as to maintain the dusty materials wet;
- Locate all the dusty activities away from any nearby ASRs as far as practicable;
- The travelling speed of vehicles within the site should be controlled to reduce the traffic induced dust dispersion;
- Immediately before leaving a construction site, all vehicles should be washed to remove any dusty materials from the bodies and wheels;
- Where a vehicle leaving the site is carrying a load of dusty materials, the load should be covered entirely by clean impervious sheeting to ensure that the dusty materials will not leak from the vehicle;
- Every stock of more than 20 bags of cement or dry pulverized fuel ash should be covered entirely by impervious sheeting or placed in an area sheltered on the top and the 3 sides;
- Cement, pulverized fuel ash or any other dusty materials collected by fabric filters or other air pollution control systems or equipment should be disposed of in totally enclosed containers;

- Where a scaffolding is erected around the perimeter of a building under construction, effective dust screens, sheeting, or netting should be provided to enclose the scaffolding from the ground floor level of the building, or if a canopy is provided at the first floor level, from the first floor level, up to the highest level of the scaffolding;
- Any skip hoist for material transport should be totally enclosed by impervious sheeting;
- Regular maintenance of construction equipment deployed on-site should be conducted to minimize gaseous and prevent black smoke emission;
- Use cleaner fuel such as ULSD or biodiesel in diesel operated construction plant or use electric power supplied from power utilities when practicable;
- Switch off the engine of PMEs when idling;
- Provide electric power supply for on-site machinery as far as practicable. Diesel generators and machinery as well as exempted machinery should be avoided to minimize the gaseous and particular matter emissions; and
- Conduct regular site audits to ensure the implementation of air quality mitigation measures.

4. OPERATION PHASE AIR QUALITY IMPACT ASSESSMENT

4.1. INTRODUCTION

4.1.1. This section identified potential impacts on air quality associated with the operation of the Proposed Development.

4.2. IDENTIFICATION OF AIR QUALITY IMPACT

4.2.1. Based on the nature of the Proposed Development and site survey observations, the potential air quality impacts during the operation of the Proposed Development were identified below:

- Vehicular Emissions from nearby road traffic;
- Industrial Emissions from nearby chimneys;
- Odour Emissions from nearby RCP;
- Emissions from car parks within the Proposed Development; and
- Emissions from kitchen within the Proposed Development.

4.3. EVALUATION OF AIR QUALITY IMPACT

Vehicular Emissions from nearby road traffic

4.3.1. The Application Site is bounded by Wo Yi Hop Road and is subject to the air quality impact associated with the vehicular emission from existing open roads. In order to comply with the buffer distance requirements as stipulated in the HKPSG, the air-sensitive uses at the Proposed Development have been positioned away from Wo Yi Hop Road. The required buffer distances from the surrounding road were summarized in **Table 4.1** and illustrated in **Figure 4.1**. No air-sensitive uses, including openable windows, fresh air intake of mechanical ventilation, and recreational uses in the open area, would be located within the buffer zones.

Table 4.1 Recommended Buffer in HKPSG (Vehicular Emissions)

Road Name	Road Type	Recommended Buffer Distance in HKPSG	Buffer Distance Allowed for the Proposed Development
Wo Yi Hop Road (from Tai Loong Street to Lei Muk Road)	District Distributor	10m	>10m
<p>Note:</p> <p>1. As advised by the Project's Traffic Consultant, Wo Yi Hop Road (from Tai Loong Street to Lei Muk Road) is classified as a District Distributor according to the Annual Traffic Census 2023. The relevant page of traffic census was enclosed in Appendix 4.1</p>			

Industrial Emissions from nearby chimneys

- 4.3.2. Based on the site survey record in **Appendix 2.1**, the industrial chimneys at Golden Sunflower Building (GSB_01-03) were no longer being used, while chimneys at Grand Industrial Building (GIB_01) and Tung Chun Soy and Canning Company (TCSCC_01-03) are located over 300m away from the Application Site. In view of no emission (GSB_01) and sufficient buffer distance allowed (GIB_01 and TCSCC_01 to 03) according to HKPSG recommendation, no adverse air quality impact from the above-mentioned chimneys is anticipated.
- 4.3.3. In order to comply with the buffer distance requirements as stipulated in the HKPSG, the air-sensitive uses at the Proposed Development have been positioned away from the industrial. **The industrial chimneys at the GDS Data Centre (GSD_01-21) located approximately 106m from the Proposed Development and are illustrated in Figure 4.2.** No air-sensitive uses, including openable windows, fresh air intake of mechanical ventilation, and recreational uses in the open area, would be located within the buffer zones.
- 4.3.4. In addition, the reliability rate of power supply from China Light and Power Company (CLP) is 99.997%¹. Given the industrial chimneys at GDS Data Centre are expected to be used for emergency power generation for the Data Centre, with the high-reliability rate of power supply from CLP, the chance of industrial chimneys at GDS Data Centre being operated is not likely and adverse air quality impact from the industrial chimneys at GDS Data Centre is not anticipated.

Odour Emissions from RCP and Market

- 4.3.5. **Ta Chuen Ping Street Refuse Collection Point (RCP), Shek Lei (II) Estate RCP, Shek Yam Estate RCP and North Kwai Chung Market are located at approximately 71m, 184m, 150m and 160m away from the Application Site respectively. Other odour emission sources including crematoria, livestock yards, stock wagon washing areas, and wholesale fish and poultry markets were not identified within the 200m assessment area. The location of the identified RCPs was shown in Figure 2.4.** During the site survey, no odour from the RCPs and the market was identified. Given that the refuses at the RCPs are enclosed inside the containers, and RCPs and the market are regularly cleaned by the Food and Environmental Hygiene Department (FEHD), no adverse odour impact on the Proposed Development is expected.

Emissions from car parks within the Proposed Development

- 4.3.6. The car parks within the Proposed Development will be designed and operated in accordance with *ProPECC PN 2/96 Control of Air Pollution in Car Parks*. The car parks

¹ CLP's Power Supply Reliability Rate (<https://www.clp.com.hk/en/power-quality>)

are mainly used for private car parking and the starting emissions generated by the vehicles are expected to be limited. Nonetheless, the idling period of vehicles will be governed by *Cap. 611 Motor Vehicle Idling (Fixed Penalty) Ordinance* which excessive emissions from idling vehicles within the Application Site is not expected. Given the above, no adverse air quality impact from car park operations is anticipated.

Emissions from the kitchen within the Proposed Development

- 4.3.7. Emissions from the kitchens on 2/F, 3/F and 4/F, and its associated cooking fumes/ventilation within the Proposed Development **which are solely serve for RCHD and RCHE residents and not under 'shop and services' use and** are controlled under APCO. The best practical control measures recommended in EPD's Guideline "Control of Oily Fume and Cooking Odour from Restaurants and Food Business" will be adopted to minimize the gaseous and odour emissions from kitchen operations. Given the above, no adverse air quality impact from kitchen operation is anticipated. Details of recommended mitigation measures were provided in **Section 4.4** below.

4.4. RECOMMENDED MITIGATION MEASURES

- 4.4.1. The following air quality mitigation measures are recommended for the operation phase of the Proposed Development:
- Positioning of the outlet of the exhaust system away from sensitive receivers as far as practicable;
 - Installation of air pollution control equipment (e.g., electrostatic precipitator, air washer, scrubbers, etc.) for exhaust system serving the cooking stoves or other cooking appliances, where appropriate; and
 - Regular maintenance of air pollution control equipment.

5. CONCLUSION

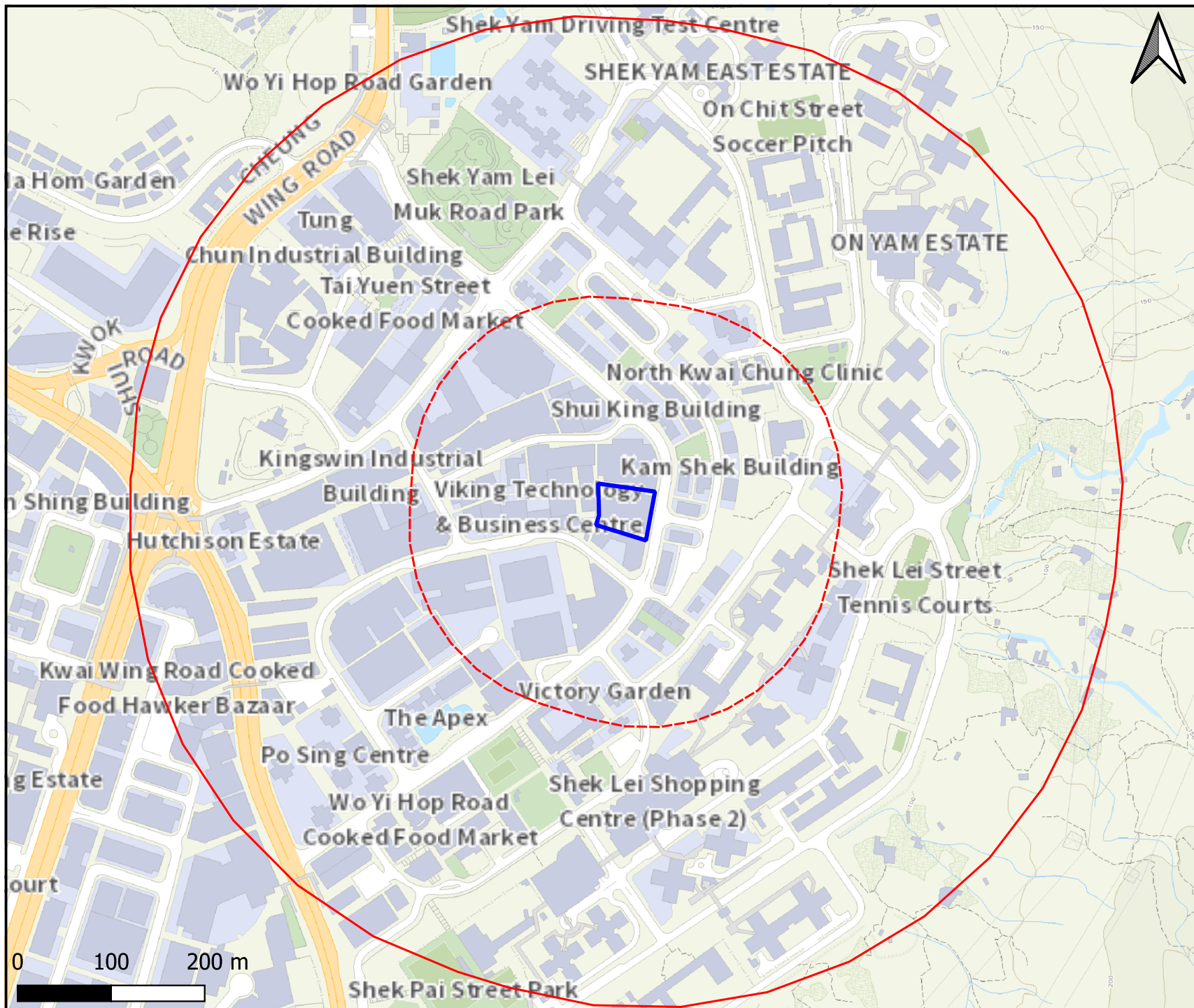
- 5.1.1. The Project Proponent proposed to rezone the Application Site from “Other Specified Uses” annotated “Business” to Residential (Group E) 2”, at Lot 316 in D.D. 444 and Kwai Chung Town Lot (KTCL) 146, 97-107 Wo Yi Hop Road, New Territories.
- 5.1.2. With the implementation of appropriate mitigation measures, no adverse air quality impact during construction is anticipated.
- 5.1.3. Sufficient buffer distances as recommended in HKPSG are allowed in the design of the Proposed Development, no adverse air quality impact due to vehicular and industrial chimneys emission are anticipated.
- 5.1.4. No adverse odour impact from the nearby RCPs on the Proposed Development is expected given the RCPs will be regularly cleaned and maintained by FEHD.
- 5.1.5. The carpark within the Proposed Development will be designed and operated in accordance with *ProPECC PN 2/96 “Control of Air Pollution in Car Parks”*. The idling period of vehicles will be governed by *Cap. 611 Motor Vehicle Idling (Fixed Penalty) Ordinance* which excessive emission from idling vehicles is not expected and no adverse air quality impact is anticipated.
- 5.1.6. The kitchen within the Proposed Development will adopt the best practical control measures recommended in EPD’s Guideline “*Control of Oily Fume and Cooking Odour from Restaurants and Food Business*” during its operation, no adverse air quality impact from kitchen operation is anticipated.

FIGURE 1.1

LOCATION OF APPLICATION SITE AND ITS ENVIRONS

FIGURE 2.1

200M AND 500M ASSESSMENT AREA



Copyright by BeeXergy Consulting Limited

Legend

- Application Site
- 200m Assessment Area
- 500m Assessment Area

	Prepared	Checked	Approved
Initial	KCC	ZC	HM
Date	240314	240314	240314

Project Title

Section 12A Application for Amendment to the Approved Kwai Chung Outline Zoning Plan No. S/KC/32 to Rezone the Application Site from "Other Specified Uses" annotated "Business" to "Residential (Group E) 2" Lot 316 in D.D. 444 and Kwai Chung Town Lot (KTCL) 146, 97-107 Wo Yi Hop Road, New Territories

Figure Title

200m and 500m Assessment Area

Figure No.	Rev.
Figure 2.1	0



BeeXergy Consulting Limited

FIGURE 2.2
PATH GRIDS COVERED THE 500M
ASSESSMENT AREA

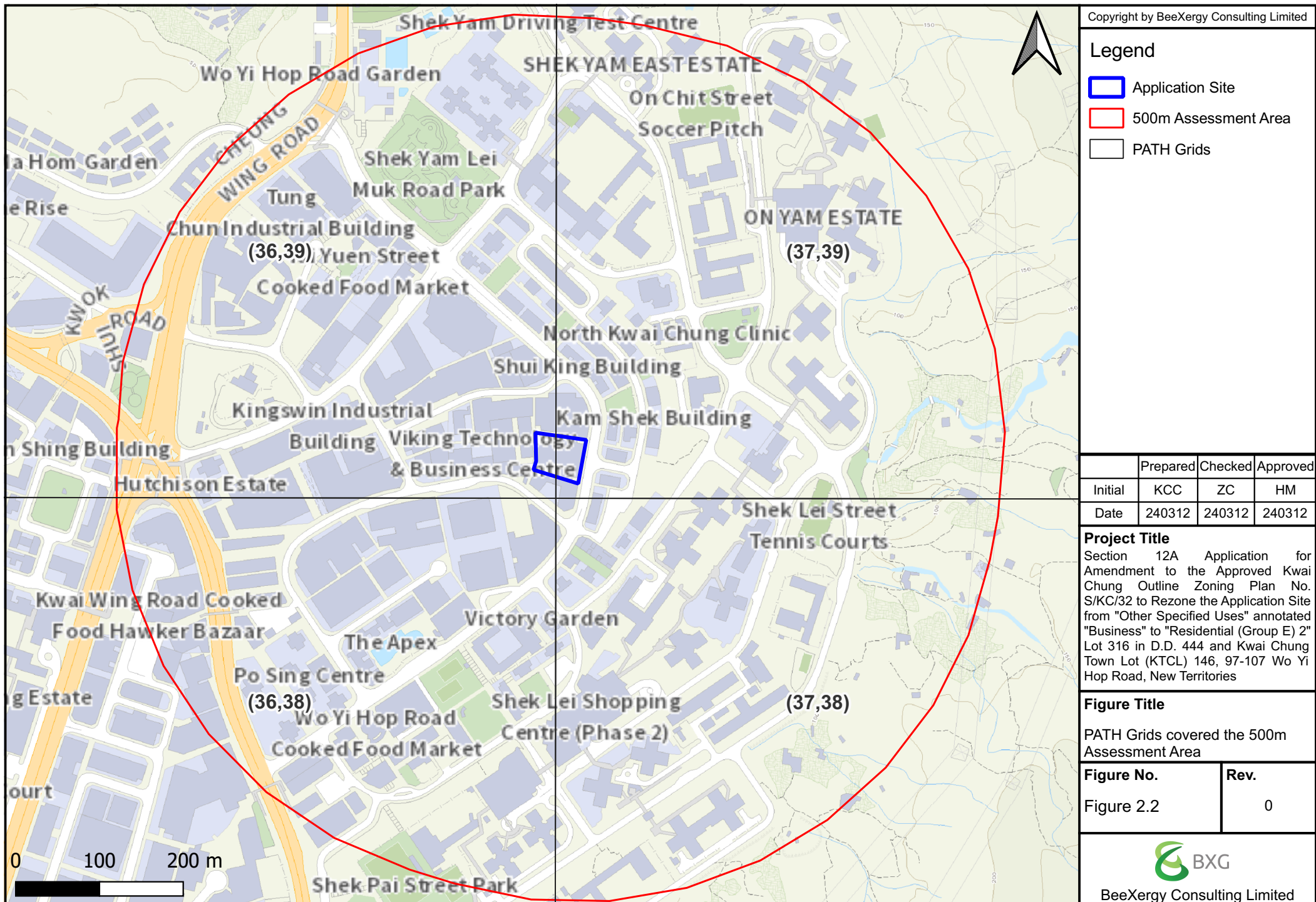
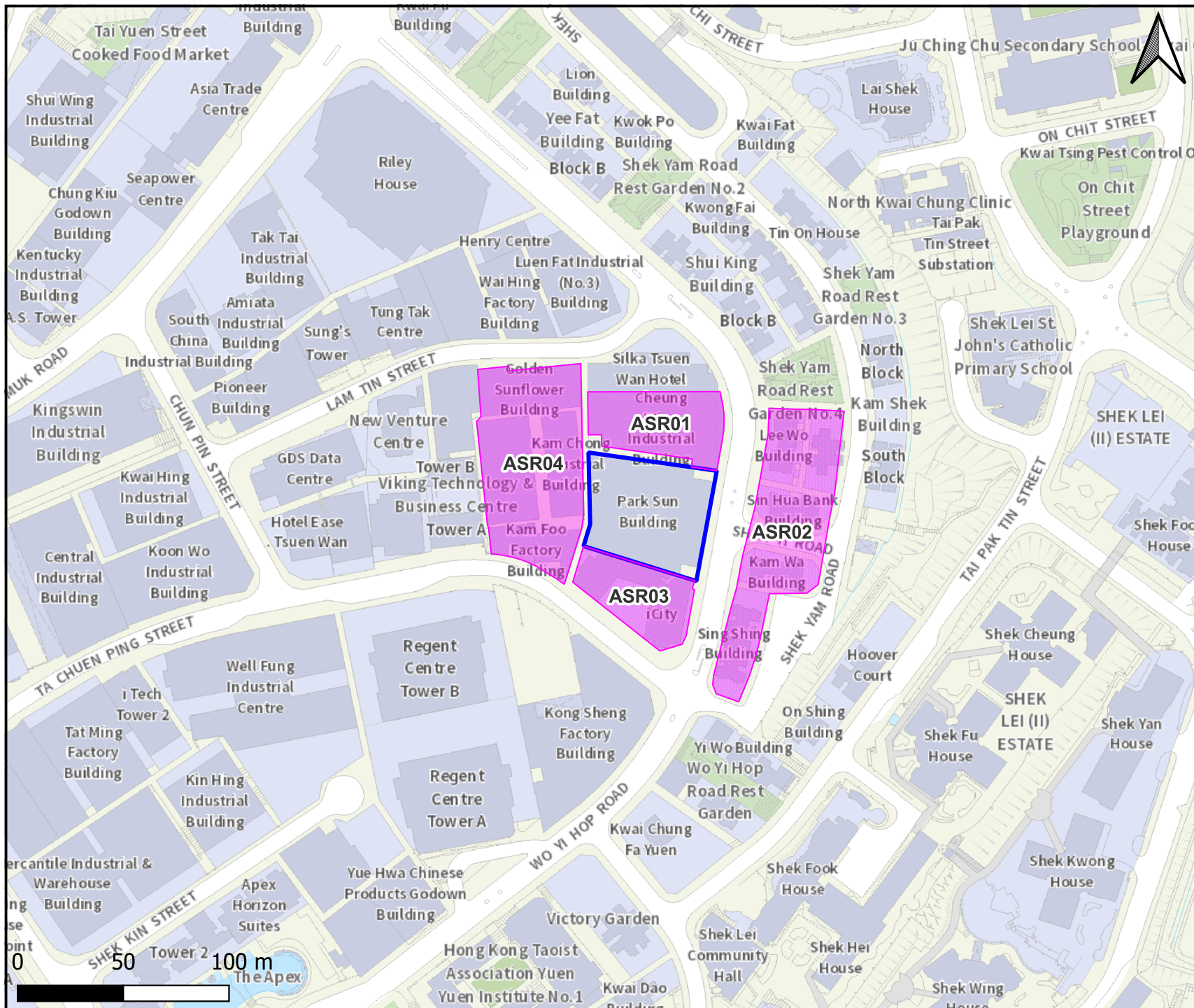


FIGURE 2.3
LOCATION OF REPRESENTATIVE AIR
SENSITIVE RECEIVERS (ASRS)



Legend

- Application Site
- Air Sensitive Receivers (ASRs)

	Prepared	Checked	Approved
Initial	KCC	ZC	HM
Date	240312	240312	240312

Project Title

Section 12A Application for Amendment to the Approved Kwai Chung Outline Zoning Plan No. S/KC/32 to Rezone the Application Site from "Other Specified Uses" annotated "Business" to "Residential (Group E) 2" Lot 316 in D.D. 444 and Kwai Chung Town Lot (KTCL) 146, 97-107 Wo Yi Hop Road, New Territories

Figure Title

Location of Representative Air Sensitive Receivers (ASRs)

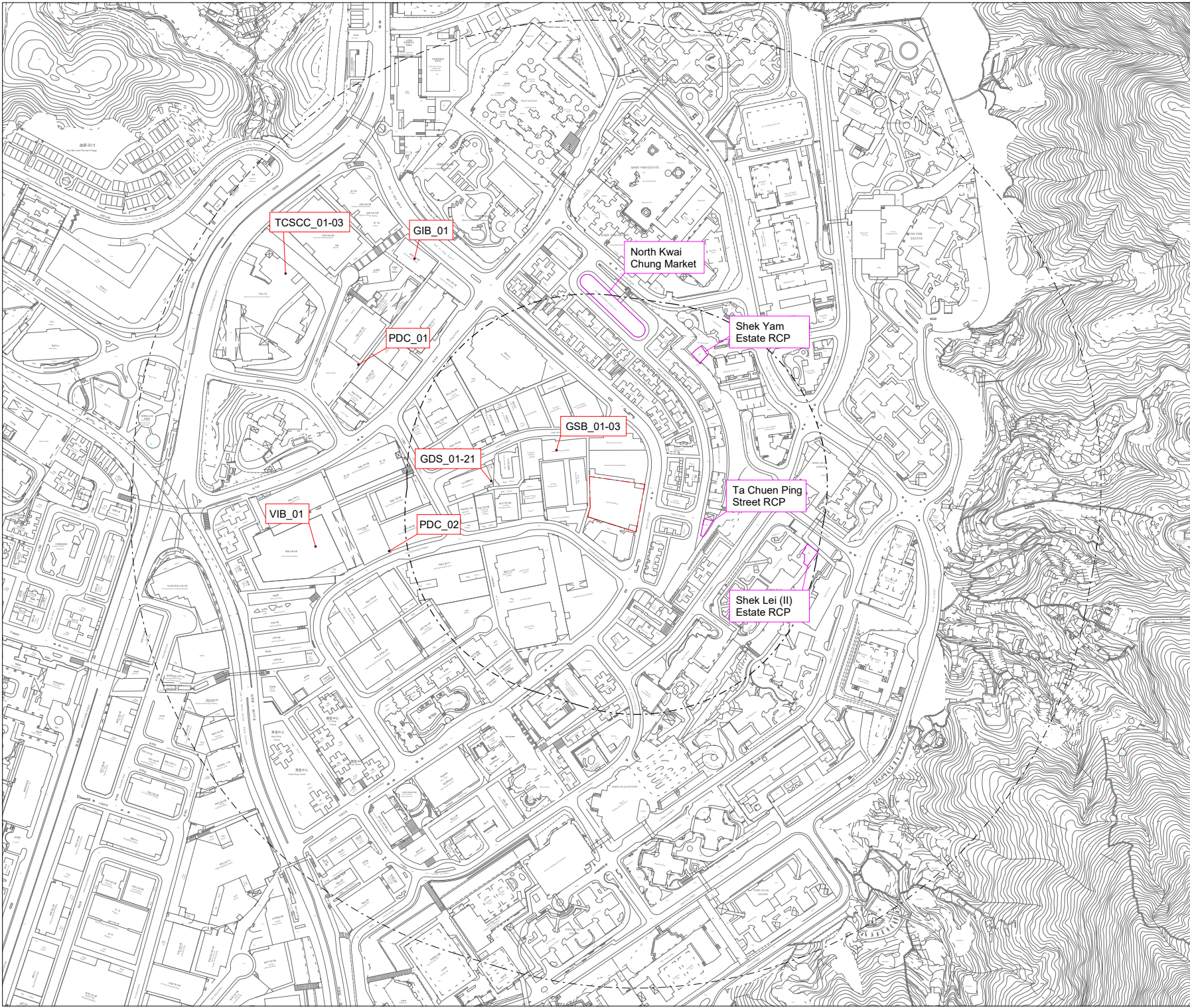
Figure No.	Rev.
Figure 2.3	0



BeeXergy Consulting Limited

FIGURE 2.4

LOCATION OF INDUSTRIAL CHIMNEYS AND REFUSE COLLECTION POINTS



Copyright by BeeXergy Consulting Limited

LEGEND:

Application Site

500/200m Assessment Area

Industrial Chimney

Refuse Collection Point (RCP)

	Prepared	Checked	Approved
Initial	LY	YS	HM
Date	20250710	20250710	20250710

Project Title

Section 12A Application for Amendment to the Approved Kwai Chung Outline Zoning Plan No. S/KC/32 to Rezone the Application Site from "Other Specified Uses" annotated "Business" to "Residential (Group E) 2" Lot 316 in D.D. 444 and Kwai Chung Town Lot (KTCL) 146, 97-107 Wo Yi Hop Road, New Territories


DrawingTitle

Location of Industrial Chimneys and Refuse Collection Points

Drawing No.	Rev.
FIGURE 2.4	0

Scale:

A4 - 1:5500

 **BXG**

BeeXergy Consulting Limited

FIGURE 4.1
10M BUFFER ZONE FOR DISTRICT
DISTRIBUTOR



LEGEND:



10m Buffer Distance

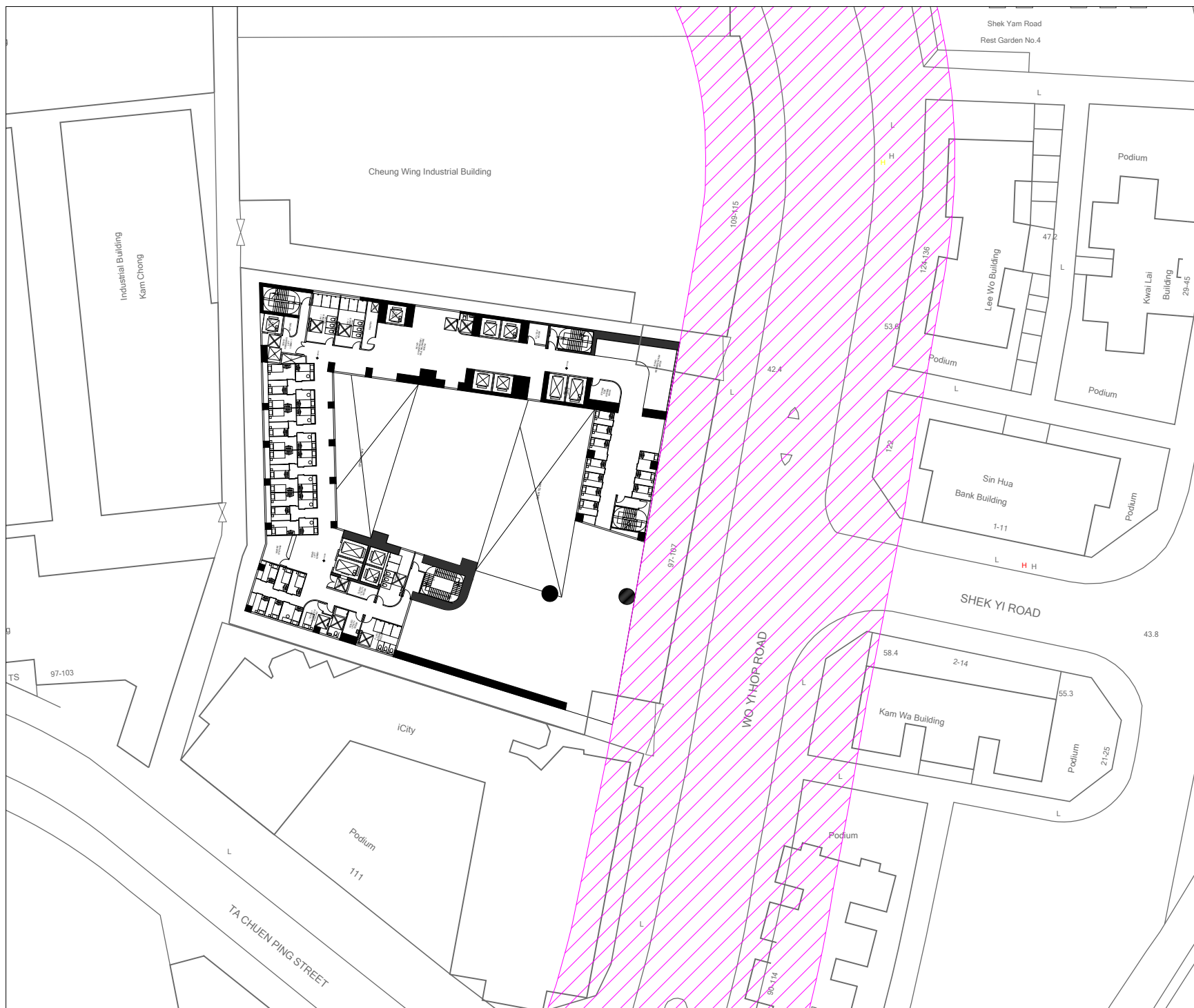
	Prepared	Checked	Approved
Initial	NY	CC	YS
Date	20240723	20240723	20240723

Project Title
Section 12A Application for Amendment to the Approved Kwai Chung Outline Zoning Plan No. S/KC/32 to Rezone the Application Site from "Other Specified Uses" annotated "Business" to "Residential (Group E) 2" Lot 316 in D.D. 444 and Kwai Chung Town Lot (KTCL) 146, 97-107 Wo Yi Hop Road, New Territories

Drawing Title
10m Buffer Zone for District Distributor (G/F)

Drawing No. Figure 4.1a	Rev. 0
----------------------------	-----------

Scale:
A4 - 1:650



Copyright by BeeXergy Consulting Limited

LEGEND:



10m Buffer Distance

	Prepared	Checked	Approved
Initial	NY	CC	YS
Date	20240723	20240723	20240723

Project Title	
---------------	--

Section 12A Application for Amendment to the Approved Kwai Chung Outline Zoning Plan No. S/KC/32 to Rezone the Application Site from "Other Specified Uses" annotated "Business" to "Residential (Group E) 2" Lot 316 in D.D. 444 and Kwai Chung Town Lot (KTCL) 146, 97-107 Wo Yi Hop Road, New Territories

Drawing Title

10m Buffer Zone for District Distributor (1/F)

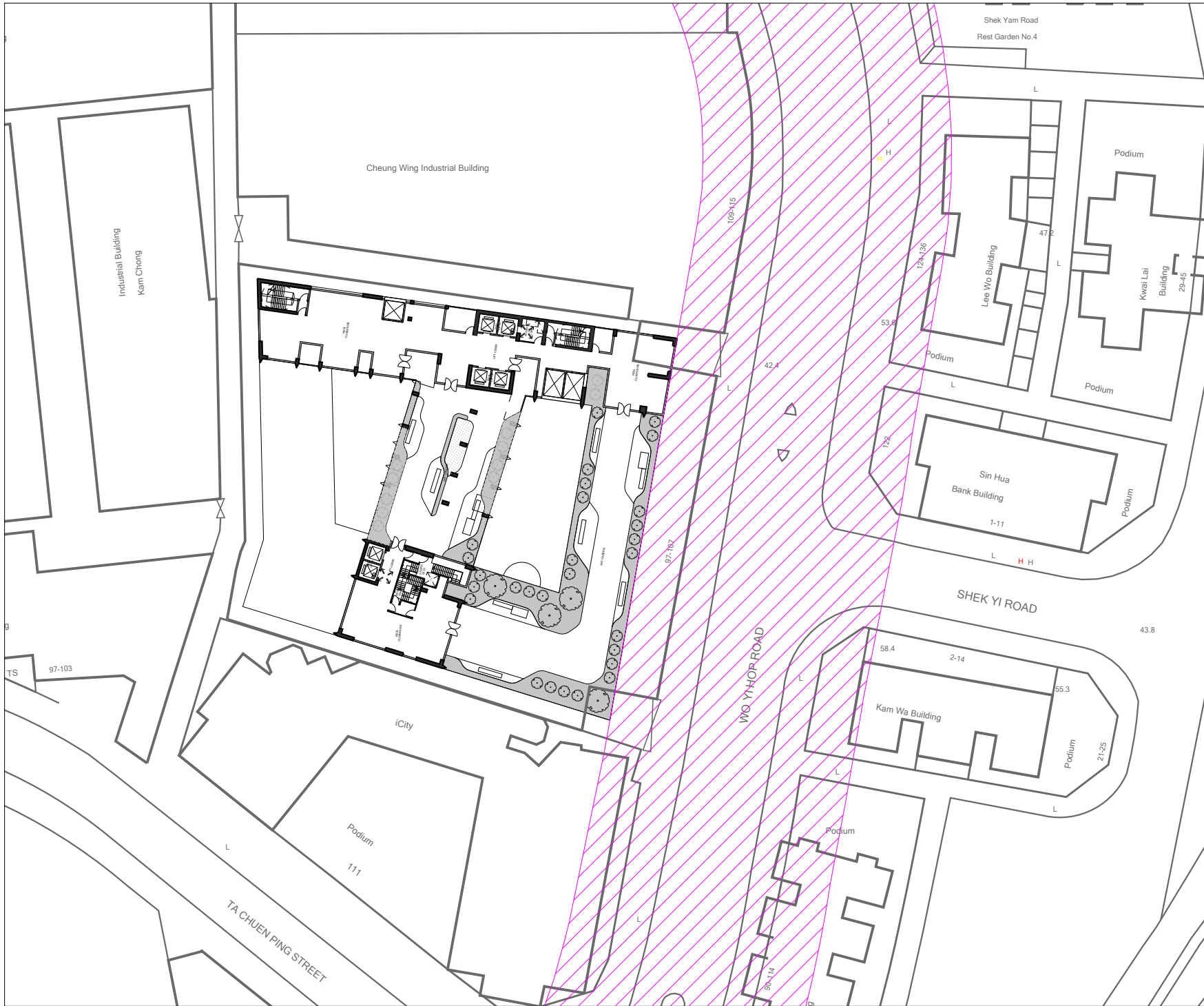
Drawing No. Figure 4.1b	Rev. 0
----------------------------	-----------

Scale:

A4 - 1:650



BeeXergy Consulting Limited



LEGEND:



10m Buffer Distance

	Prepared	Checked	Approved
Initial	NY	CC	YS
Date	20240723	20240723	20240723

Project Title

Section 12A Application for Amendment to the Approved Kwai Chung Outline Zoning Plan No. S/KC/32 to Rezone the Application Site from "Other Specified Uses" annotated "Business" to "Residential (Group E) 2" Lot 316 in D.D. 444 and Kwai Chung Town Lot (KTCL) 146, 97-107 Wo Yi Hop Road, New Territories

Drawing Title

10m Buffer Zone for District Distributor (7/F)

Drawing No.	Rev.
Figure 4.1h	0

Scale: A4 - 1:650





Copyright by BeeXergy Consulting Limited

LEGEND:



10m Buffer Distance

	Prepared	Checked	Approved
Initial	NY	CC	YS
Date	20240723	20240723	20240723

Project Title	
---------------	--

Section 12A Application for Amendment to the Approved Kwai Chung Outline Zoning Plan No. S/KC/32 to Rezone the Application Site from "Other Specified Uses" annotated "Business" to "Residential (Group E) 2" Lot 316 in D.D. 444 and Kwai Chung Town Lot (KTCL) 146, 97-107 Wo Yi Hop Road, New Territories

Drawing Title

10m Buffer Zone for District Distributor
(21/F-22/F)

Drawing No. Figure 4.1p	Rev. 0
----------------------------	-----------

Scale:

A4 - 1:650



BeeXergy Consulting Limited



Copyright by BeeXergy Consulting Limited

LEGEND:



10m Buffer Distance

	Prepared	Checked	Approved
Initial	NY	CC	YS
Date	20240723	20240723	20240723

Project Title	
---------------	--

Section 12A Application for Amendment to the Approved Kwai Chung Outline Zoning Plan No. S/KC/32 to Rezone the Application Site from "Other Specified Uses" annotated "Business" to "Residential (Group E) 2" Lot 316 in D.D. 444 and Kwai Chung Town Lot (KTCL) 146, 97-107 Wo Yi Hop Road, New Territories

Drawing Title

10m Buffer Zone for District Distributor (23/F)

Drawing No. Figure 4.1q	Rev. 0
----------------------------	-----------

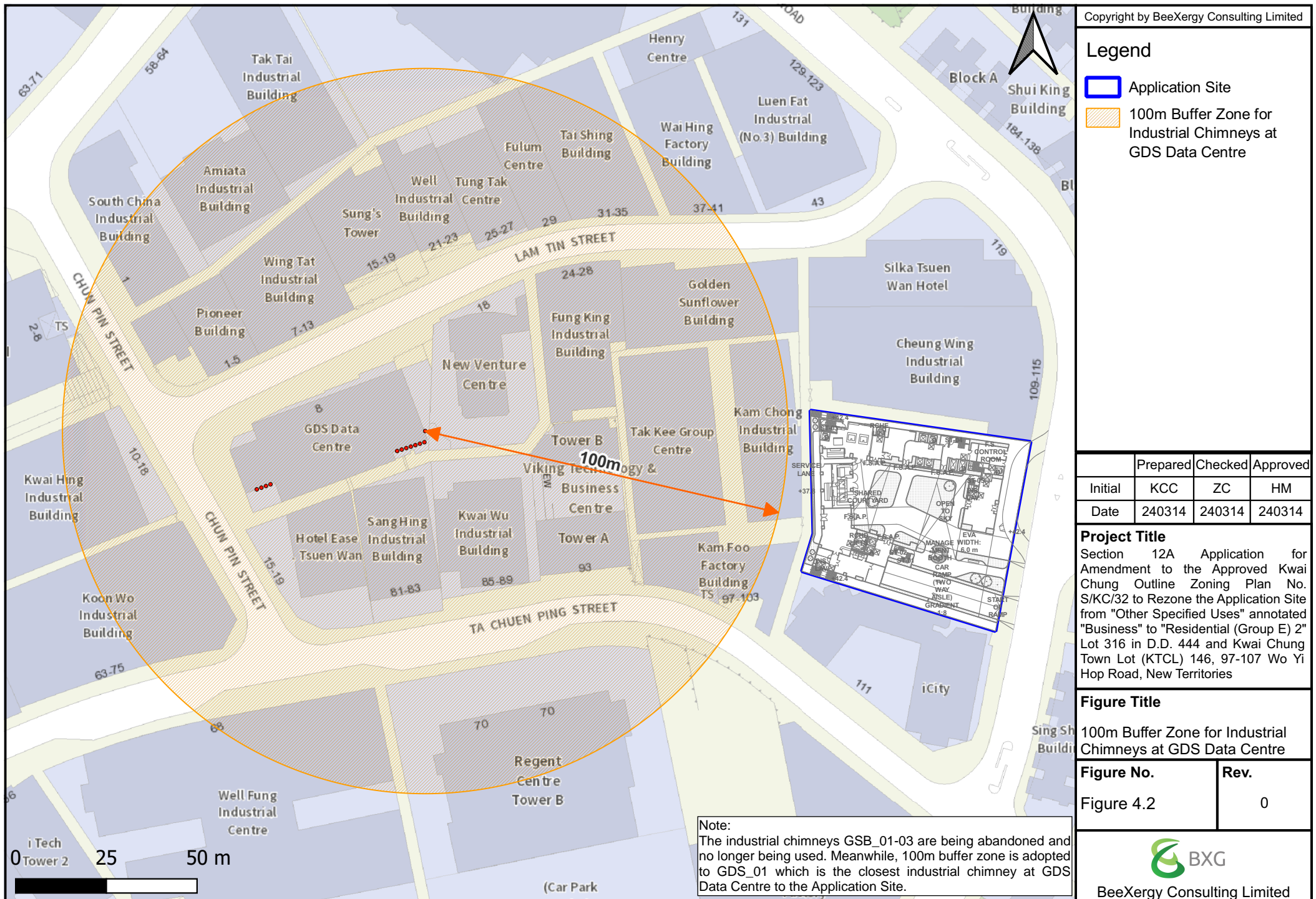
Scale:

A4 - 1:650



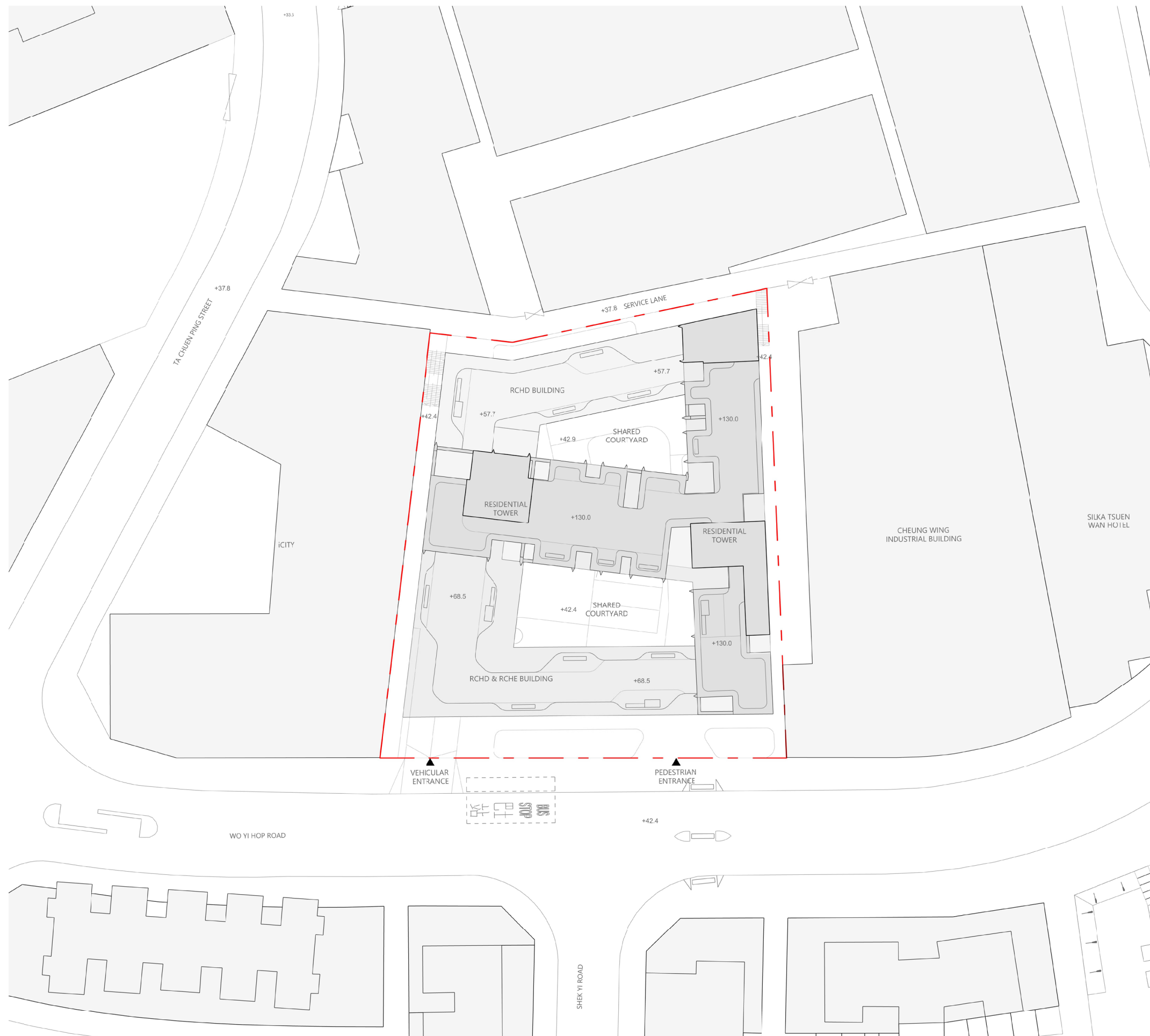
BeeXergy Consulting Limited

FIGURE 4.2
100M BUFFER ZONE FOR INDUSTRIAL
CHIMNEYS AT GDS DATA CENTRE



APPENDIX 1.1

MASTER LAYOUT PLAN



MASTER LAYOUT PLAN



DeSPACE (International) Limited

升
建
策

index
architecture
limited

www.indexarchitecture.com



- RESIDENTIAL
- RCHE
- RCHD
- SHARED USE

index
architecture
limited

Flat 12, 6/F,
Decos Industrial Centre,
12 Kut Shing Street, Chai Wan,
Hong Kong SAR
Tel: (852) 2155 1007
Fax: (852) 2155 1008
Email: info@indexarchitecture.com

FOR INFORMATION

Issue	Description	Date
-	ISSUE	10-04-2024

ALL DRAWINGS AND WRITTEN
MATERIAL HEREIN CONSTITUTE
THE ORIGINAL AND UNPUBLISHED
WORK OF THE DESIGNER, AND
THE SAME WAY NOT BE
DUPLICATED, USED, OR
DISCLOSED WITHOUT THE WRITTEN
CONSENT OF THE DESIGNER.

ALL DIMENSION TO BE VERIFIED
BY CONTRACTOR

Project no: 22013

Project: Park Sun Building Redevelopment

Client: Kin Ying Co. Ltd.

Address: Wo Yi Hop Road, Kwai Chung
Hong Kong

Drawn: OC Scale: 1:250@A3

Title: BASEMENT 1/F Layout Plan

Sheet: Rev: -

0 1 2 5 m
1:250 @A3



- RESIDENTIAL
- RCHE
- RCHD
- SHARED USE
- SHOP

index
architecture
limited

Flat 12, 6/F,
Decos Industrial Centre,
12 Kut Shing Street, Chai Wan,
Hong Kong SAR
Tel: (852) 2155 1007
Fax: (852) 2155 1008
Email: info@indexarchitecture.com

FOR INFORMATION

Issue	Description	Date
1	ISSUE	10-04-2024

ALL DRAWINGS AND WRITTEN
MATERIAL HEREIN CONSTITUTE
THE ORIGINAL AND UNPUBLISHED
WORK OF THE DESIGNER, AND
THE SAME WAY NOT BE
DUPLICATED, USED, OR
DISCLOSED WITHOUT THE WRITTEN
CONSENT OF THE DESIGNER.

ALL DIMENSION TO BE VERIFIED
BY CONTRACTOR

Project no: 22013

Project: Park Sun Building Redevelopment

Client: Kin Ying Co. Ltd.

Address: Wo Yi Hop Road, Kwai Chung

Hong Kong

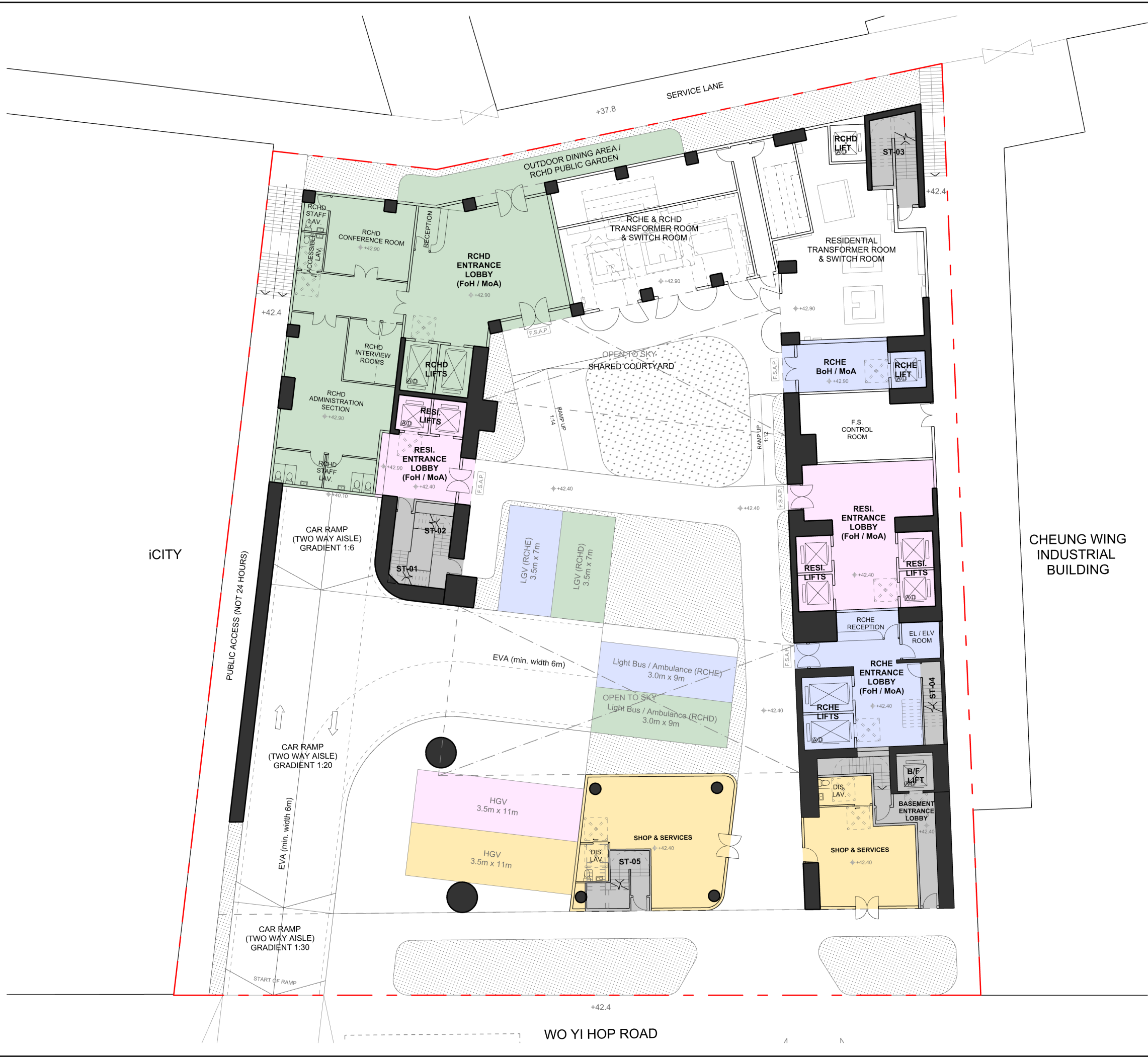
Drawn: OC Scale: 1:250@A3

Title: LOWER GROUND 1/F Layout Plan

Sheet: Rev: -

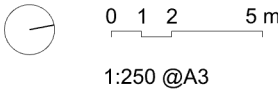
0 1 2 5 m

1:250 @A3



- RESIDENTIAL
- RCHE
- RCHD
- SHARED USE
- SHOP

- GRASS
- SHRUB



index
architecture
limited

Flat 12, 6/F,
Decos Industrial Centre,
12 Kut Shing Street, Chai Wan,
Hong Kong SAR
Tel: (852) 2155 1007
Fax: (852) 2155 1008
Email: info@indexarchitecture.com

FOR INFORMATION

Issue	Description	Date
1	ISSUE	10-04-2024

ALL DRAWINGS AND WRITTEN MATERIAL HEREIN CONSTITUTE THE ORIGINAL AND UNPUBLISHED WORK OF THE DESIGNER, AND THE SAME WAY NOT BE DUPLICATED, USED, OR DISCLOSED WITHOUT THE WRITTEN CONSENT OF THE DESIGNER.

ALL DIMENSION TO BE VERIFIED BY CONTRACTOR

Project no: 22013

Project: Park Sun Building Redevelopment

Client: Kin Ying Co. Ltd.

Address: Wo Yi Hop Road, Kwai Chung
Hong Kong

Drawn: OC Scale: 1:250@A3

Title: G/F Layout Plan

Sheet: Rev: -



RCHD
SHARED USE

index
architecture
limited

Flat 12, 6/F,
Deco Industrial Centre,
12 Kut Shing Street, Chai Wan,
Hong Kong SAR
Tel: (852) 2155 1007
Fax: (852) 2155 1008
Email: info@indexarchitecture.com

FOR INFORMATION

Issue	Description	Date
1	ISSUE	10-04-2024

ALL DRAWINGS AND WRITTEN MATERIAL HEREIN CONSTITUTE THE ORIGINAL AND UNPUBLISHED WORK OF THE DESIGNER, AND THE SAME WAY NOT BE DUPLICATED, USED, OR DISCLOSED WITHOUT THE WRITTEN CONSENT OF THE DESIGNER.

ALL DIMENSION TO BE VERIFIED BY CONTRACTOR

Project no: 22013

Project: Park Sun Building Redevelopment

Client: Kin Ying Co. Ltd.

Address: Wo Yi Hop Road, Kwai Chung
Hong Kong

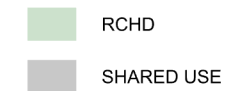
Drawn: OC Scale: 1:250@A3

Title: 1/F Layout Plan

Sheet: Rev: -

0 1 2 5 m

1:250 @A3



FOR INFORMATION

ALL DRAWINGS AND WRITTEN MATERIAL HEREIN CONSTITUTE THE ORIGINAL AND UNPUBLISHED WORK OF THE DESIGNER, AND THE SAME WAY NOT BE DUPLICATED, USED, OR DISCLOSED WITHOUT THE WRITTEN CONSENT OF THE DESIGNER.

ALL DIMENSION TO BE VERIFIED BY CONTRACTOR

Project no: 22013

Project: Park Sun Building Redevelopment

Client: Kin Ying Co. Ltd.

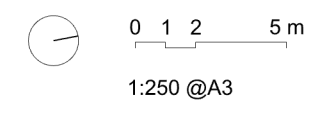
Address: Wo Yi Hop Road, Kwai Chung

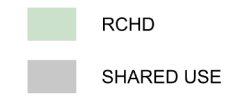
Hong Kong

Drawn: OC Scale: 1:250@A3

Title: 2/F Layout Plan

Sheet: Rev: -





FOR INFORMATION

ALL DRAWINGS AND WRITTEN MATERIAL HEREIN CONSTITUTE THE ORIGINAL AND UNPUBLISHED WORK OF THE DESIGNER, AND THE SAME WAY NOT BE DUPLICATED, USED, OR DISCLOSED WITHOUT THE WRITTEN CONSENT OF THE DESIGNER.

Project no: 22013

Project: Park Sun Building Redevelopment

Client: Kin Ying Co. Ltd.

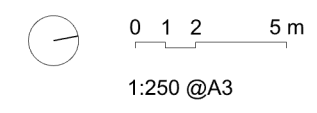
Address: Wo Yi Hop Road, Kwai Chung

Hong Kong

Drawn: OC Scale: 1:250@A3

Title: 3F Layout Plan

Sheet: Rev: -





RCHE
SHARED USE

GRASS
SHRUB

0 1 2 5 m
1:250 @A3

index
architecture
limited
Flat 12, 6/F,
Decos Industrial Centre,
12 Kut Shing Street, Chai Wan,
Hong Kong SAR
Tel: (852) 2155 1007
Fax: (852) 2155 1008
Email: info@indexarchitecture.com

FOR INFORMATION

Issue	Description	Date
-	ISSUE	10-04-2024

ALL DRAWINGS AND WRITTEN MATERIAL HEREIN CONSTITUTE THE ORIGINAL AND UNPUBLISHED WORK OF THE DESIGNER, AND THE SAME WAY NOT BE DUPLICATED, USED, OR DISCLOSED WITHOUT THE WRITTEN CONSENT OF THE DESIGNER.

ALL DIMENSION TO BE VERIFIED BY CONTRACTOR

Project no: 22013
Project: Park Sun Building Redevelopment
Client: Kin Ying Co. Ltd.
Address: Wo Yi Hop Road, Kwai Chung
Hong Kong
Drawn: OC Scale: 1:250@A3
Title: 4/F Layout Plan
Sheet: Rev: -



RCHE
SHARED USE

0 1 2 5 m
1:250 @A3

index
architecture
limited
Flat 12, 6/F,
Decos Industrial Centre,
12 Kut Shing Street, Chai Wan,
Hong Kong SAR
Tel: (852) 2155 1007
Fax: (852) 2155 1008
Email: info@indexarchitecture.com

FOR INFORMATION

Issue	Description	Date
-	ISSUE	10-04-2024

ALL DRAWINGS AND WRITTEN MATERIAL HEREIN CONSTITUTE THE ORIGINAL AND UNPUBLISHED WORK OF THE DESIGNER, AND THE SAME WAY NOT BE DUPLICATED, USED, OR DISCLOSED WITHOUT THE WRITTEN CONSENT OF THE DESIGNER.

ALL DIMENSION TO BE VERIFIED BY CONTRACTOR

Project no: 22013

Project: Park Sun Building Redevelopment

Client: Kin Ying Co. Ltd.

Address: Wo Yi Hop Road, Kwai Chung
Hong Kong

Drawn: OC Scale: 1:250@A3

Title: 5/F Layout Plan

Sheet: Rev: -



RCHE
SHARED USE

0 1 2 5 m
1:250 @A3

index
architecture
limited
Flat 12, 6/F,
Decos Industrial Centre,
12 Kut Shing Street, Chai Wan,
Hong Kong SAR
Tel: (852) 2155 1007
Fax: (852) 2155 1008
Email: info@indexarchitecture.com

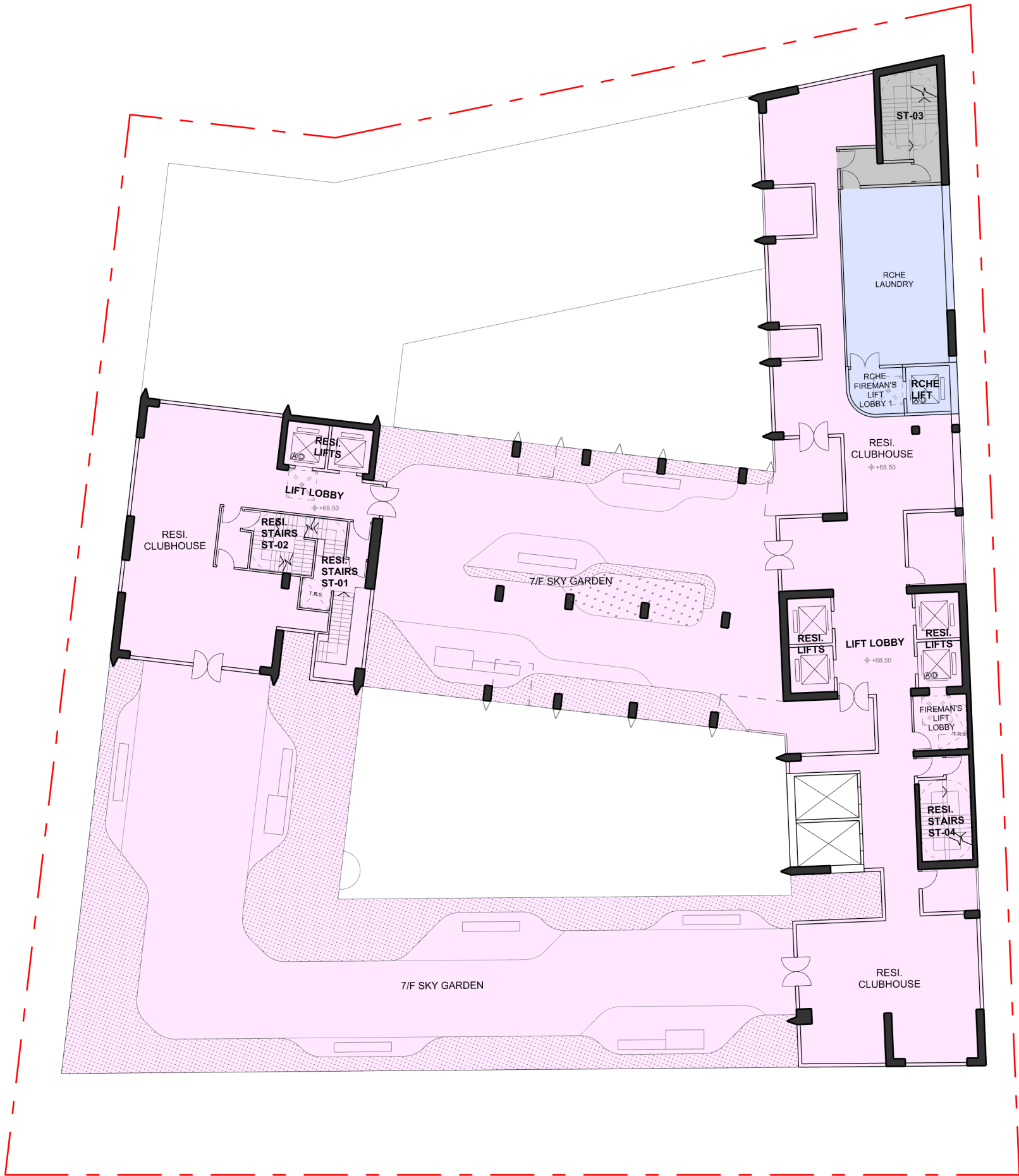
FOR INFORMATION

Issue	Description	Date
1	ISSUE	10-04-2024

ALL DRAWINGS AND WRITTEN MATERIAL HEREIN CONSTITUTE THE ORIGINAL AND UNPUBLISHED WORK OF THE DESIGNER, AND THE SAME WAY NOT BE DUPLICATED, USED, OR DISCLOSED WITHOUT THE WRITTEN CONSENT OF THE DESIGNER.

ALL DIMENSION TO BE VERIFIED BY CONTRACTOR

Project no: 22013
Project: Park Sun Building Redevelopment
Client: Kin Ying Co. Ltd.
Address: Wo Yi Hop Road, Kwai Chung
Hong Kong
Drawn: OC Scale: 1:250@A3
Title: 6/F Layout Plan
Sheet: Rev: -



RESIDENTIAL
RCHE
SHARED USE

GRASS
SHRUB

0 1 2 5 m
1:250 @A3

index
architecture
limited
Flat 12, 6/F,
Decos Industrial Centre,
12 Kut Shing Street, Chai Wan,
Hong Kong SAR
Tel: (852) 2155 1007
Fax: (852) 2155 1008
Email: info@indexarchitecture.com

FOR INFORMATION

Issue	Description	Date
-	ISSUE	10-04-2024

ALL DRAWINGS AND WRITTEN MATERIAL HEREIN CONSTITUTE THE ORIGINAL AND UNPUBLISHED WORK OF THE DESIGNER, AND THE SAME WAY NOT BE DUPLICATED, USED, OR DISCLOSED WITHOUT THE WRITTEN CONSENT OF THE DESIGNER.

ALL DIMENSION TO BE VERIFIED BY CONTRACTOR

Project no: 22013

Project: Park Sun Building Redevelopment

Client: Kin Ying Co. Ltd.

Address: Wo Yi Hop Road, Kwai Chung
Hong Kong

Drawn: OC Scale: 1:250@A3

Title: 7/F Layout Plan

Sheet: Rev: -



RESIDENTIAL

index
architecture
limited

Flat 12, 6/F,
Decos Industrial Centre,
12 Kut Shing Street, Chai Wan,
Hong Kong SAR
Tel: (852) 2155 1007
Fax: (852) 2155 1008
Email: info@indexarchitecture.com

FOR INFORMATION

Issue	Description	Date
1	ISSUE	10-04-2024

ALL DRAWINGS AND WRITTEN MATERIAL HEREIN CONSTITUTE THE ORIGINAL AND UNPUBLISHED WORK OF THE DESIGNER, AND THE SAME WAY NOT BE DUPLICATED, USED, OR DISCLOSED WITHOUT THE WRITTEN CONSENT OF THE DESIGNER.

ALL DIMENSION TO BE VERIFIED BY CONTRACTOR

Project no: 22013

Project: Park Sun Building Redevelopment

Client: Kin Ying Co. Ltd.

Address: Wo Yi Hop Road, Kwai Chung
Hong Kong

Drawn: OC Scale: 1:250@A3

Title: 8/F Layout Plan

Sheet: Rev: -

RESIDENTIAL



Floor Level:
9/F: +74.65 10/F: +77.73 11/F: +80.80 12/F: +83.88

0 1 2 5 m
1:250 @A3

index
architecture
limited

Flat 12, 6/F,
Decos Industrial Centre,
12 Kut Shing Street, Chai Wan,
Hong Kong SAR
Tel: (852) 2155 1007
Fax: (852) 2155 1008
Email: info@indexarchitecture.com

FOR INFORMATION

Issue	Description	Date
-	ISSUE	10-04-2024

ALL DRAWINGS AND WRITTEN
MATERIAL HEREIN CONSTITUTE
THE ORIGINAL AND UNPUBLISHED
WORK OF THE DESIGNER, AND
THE SAME WAY NOT BE
DUPLICATED, USED, OR
DISCLOSED WITHOUT THE WRITTEN
CONSENT OF THE DESIGNER.

ALL DIMENSION TO BE VERIFIED
BY CONTRACTOR

Project no: 22013

Project: Park Sun Building Redevelopment

Client: Kin Ying Co. Ltd.

Address: Wo Yi Hop Road, Kwai Chung
Hong Kong

Drawn: OC Scale: 1:250@A3

Title: 9-12/F Layout Plan

Sheet: Rev: -

RESIDENTIAL



Floor Level:
13/F: +86.95



0 1 2 5 m

1:250 @A3

index
architecture
limited

Flat 12, 6/F,
Decos Industrial Centre,
12 Kut Shing Street, Chai Wan,
Hong Kong SAR
Tel: (852) 2155 1007
Fax: (852) 2155 1008
Email: info@indexarchitecture.com

FOR INFORMATION

Issue	Description	Date
-	ISSUE	10-04-2024

ALL DRAWINGS AND WRITTEN
MATERIAL HEREIN CONSTITUTE
THE ORIGINAL AND UNPUBLISHED
WORK OF THE DESIGNER, AND
THE SAME WAY NOT BE
DUPLICATED, USED, OR
DISCLOSED WITHOUT THE WRITTEN
CONSENT OF THE DESIGNER.

ALL DIMENSION TO BE VERIFIED
BY CONTRACTOR

Project no: 22013

Project: Park Sun Building Redevelopment

Client: Kin Ying Co. Ltd.

Address: Wo Yi Hop Road, Kwai Chung
Hong Kong

Drawn: OC Scale: 1:250@A3

Title: 13/F Layout Plan

Sheet: Rev: -

RESIDENTIAL



Floor Level:
14/F: +90.03



0 1 2 5 m

1:250 @A3

index
architecture
limited

Flat 12, 6/F,
Deco Industrial Centre,
12 Kut Shing Street, Chai Wan,
Hong Kong SAR
Tel: (852) 2155 1007
Fax: (852) 2155 1008
Email: info@indexarchitecture.com

FOR INFORMATION		
Issue	Description	Date
-	ISSUE	10-04-2024

ALL DRAWINGS AND WRITTEN
MATERIAL HEREIN CONSTITUTE
THE ORIGINAL AND UNPUBLISHED
WORK OF THE DESIGNER, AND
THE SAME WAY NOT BE
DUPLICATED, USED, OR
DISCLOSED WITHOUT THE WRITTEN
CONSENT OF THE DESIGNER.

ALL DIMENSION TO BE VERIFIED
BY CONTRACTOR

Project no: 22013

Project: Park Sun Building Redevelopment

Client: Kin Ying Co. Ltd.

Address: Wo Yi Hop Road, Kwai Chung
Hong Kong

Drawn: OC Scale: 1:250@A3

Title: 14/F Layout Plan

Sheet: Rev: -

RESIDENTIAL



Floor Level:
15/F: +93.10



0 1 2 5 m

1:250 @A3

index
architecture
limited

Flat 12, 6/F,
Deco Industrial Centre,
12 Kut Shing Street, Chai Wan,
Hong Kong SAR
Tel: (852) 2155 1007
Fax: (852) 2155 1008
Email: info@indexarchitecture.com

FOR INFORMATION

Issue	Description	Date
-	ISSUE	10-04-2024

ALL DRAWINGS AND WRITTEN
MATERIAL HEREIN CONSTITUTE
THE ORIGINAL AND UNPUBLISHED
WORK OF THE DESIGNER, AND
THE SAME WAY NOT BE
DUPLICATED, USED, OR
DISCLOSED WITHOUT THE WRITTEN
CONSENT OF THE DESIGNER.

ALL DIMENSION TO BE VERIFIED
BY CONTRACTOR

Project no: 22013

Project: Park Sun Building Redevelopment

Client: Kin Ying Co. Ltd.

Address: Wo Yi Hop Road, Kwai Chung
Hong Kong

Drawn: OC Scale: 1:250@A3

Title: 15/F Layout Plan

Sheet: Rev: -

RESIDENTIAL



Floor Level:
16/F: +96.18 17/F: +99.25 18/F: +102.33

0 1 2 5 m
1:250 @A3

index
architecture
limited

Flat 12, 6/F,
Decos Industrial Centre,
12 Kut Shing Street, Chai Wan,
Hong Kong SAR
Tel: (852) 2155 1007
Fax: (852) 2155 1008
Email: info@indexarchitecture.com

FOR INFORMATION

Issue	Description	Date
-	ISSUE	10-04-2024

ALL DRAWINGS AND WRITTEN
MATERIAL HEREIN CONSTITUTE
THE ORIGINAL AND UNPUBLISHED
WORK OF THE DESIGNER, AND
THE SAME WAY NOT BE
DUPLICATED, USED, OR
DISCLOSED WITHOUT THE WRITTEN
CONSENT OF THE DESIGNER.

ALL DIMENSION TO BE VERIFIED
BY CONTRACTOR

Project no: 22013

Project: Park Sun Building Redevelopment

Client: Kin Ying Co. Ltd.

Address: Wo Yi Hop Road, Kwai Chung
Hong Kong

Drawn: OC Scale: 1:250@A3

Title: 16-18/F Layout Plan

Sheet: Rev: -

RESIDENTIAL



Floor Level:
19/F: +105.40 20/F: +108.48

0 1 2 5 m
1:250 @A3

index
architecture
limited

Flat 12, 6/F,
Deco Industrial Centre,
12 Kut Shing Street, Chai Wan,
Hong Kong SAR
Tel: (852) 2155 1007
Fax: (852) 2155 1008
Email: info@indexarchitecture.com

FOR INFORMATION

Issue	Description	Date
-	ISSUE	10-04-2024

ALL DRAWINGS AND WRITTEN
MATERIAL HEREIN CONSTITUTE
THE ORIGINAL AND UNPUBLISHED
WORK OF THE DESIGNER, AND
THE SAME WAY NOT BE
DUPLICATED, USED, OR
DISCLOSED WITHOUT THE WRITTEN
CONSENT OF THE DESIGNER.

ALL DIMENSION TO BE VERIFIED
BY CONTRACTOR

Project no: 22013

Project: Park Sun Building Redevelopment

Client: Kin Ying Co. Ltd.

Address: Wo Yi Hop Road, Kwai Chung
Hong Kong

Drawn: OC Scale: 1:250@A3

Title: 19-20/F Layout Plan

Sheet: Rev: -

RESIDENTIAL



Floor Level:
21/F: +111.55 22/F: +114.63

0 1 2 5 m
1:250 @A3

index
architecture
limited

Flat 12, 6/F,
Decos Industrial Centre,
12 Kut Shing Street, Chai Wan,
Hong Kong SAR
Tel: (852) 2155 1007
Fax: (852) 2155 1008
Email: info@indexarchitecture.com

FOR INFORMATION

Issue	Description	Date
-	ISSUE	10-04-2024

ALL DRAWINGS AND WRITTEN
MATERIAL HEREIN CONSTITUTE
THE ORIGINAL AND UNPUBLISHED
WORK OF THE DESIGNER, AND
THE SAME WAY NOT BE
DUPLICATED, USED, OR
DISCLOSED WITHOUT THE WRITTEN
CONSENT OF THE DESIGNER.

ALL DIMENSION TO BE VERIFIED
BY CONTRACTOR

Project no: 22013

Project: Park Sun Building Redevelopment

Client: Kin Ying Co. Ltd.

Address: Wo Yi Hop Road, Kwai Chung
Hong Kong

Drawn: OC Scale: 1:250@A3

Title: 21-22/F Layout Plan

Sheet: Rev: -

RESIDENTIAL

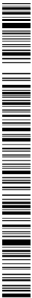


Floor Level:
23/F: +117.70



0 1 2 5 m

1:250 @A3



index
architecture
limited

Flat 12, 6/F,
Deco Industrial Centre,
12 Kut Shing Street, Chai Wan,
Hong Kong SAR
Tel: (852) 2155 1007
Fax: (852) 2155 1008
Email: info@indexarchitecture.com

FOR INFORMATION

Issue	Description	Date
-	ISSUE	10-04-2024

ALL DRAWINGS AND WRITTEN
MATERIAL HEREIN CONSTITUTE
THE ORIGINAL AND UNPUBLISHED
WORK OF THE DESIGNER, AND
THE SAME WAY NOT BE
DUPLICATED, USED, OR
DISCLOSED WITHOUT THE WRITTEN
CONSENT OF THE DESIGNER.

ALL DIMENSION TO BE VERIFIED
BY CONTRACTOR

Project no: 22013

Project: Park Sun Building Redevelopment
Client: Kin Ying Co. Ltd.
Address: Wo Yi Hop Road, Kwai Chung
Hong Kong

Drawn: OC Scale: 1:250@A3

Title: 23/F Layout Plan

Sheet: Rev: -

RESIDENTIAL



Floor Level:
24/F: +120.78 25/F: +123.85 26/F: +126.93

0 1 2 5 m
1:250 @A3

index
architecture
limited
Flat 12, 6/F,
Deco Industrial Centre,
12 Kut Shing Street, Chai Wan,
Hong Kong SAR
Tel: (852) 2155 1007
Fax: (852) 2155 1008
Email: info@indexarchitecture.com

FOR INFORMATION

Issue	Description	Date
-	ISSUE	10-04-2024

ALL DRAWINGS AND WRITTEN
MATERIAL HEREIN CONSTITUTE
THE ORIGINAL AND UNPUBLISHED
WORK OF THE DESIGNER, AND
THE SAME WAY NOT BE
DUPLICATED, USED, OR
DISCLOSED WITHOUT THE WRITTEN
CONSENT OF THE DESIGNER.

ALL DIMENSION TO BE VERIFIED
BY CONTRACTOR

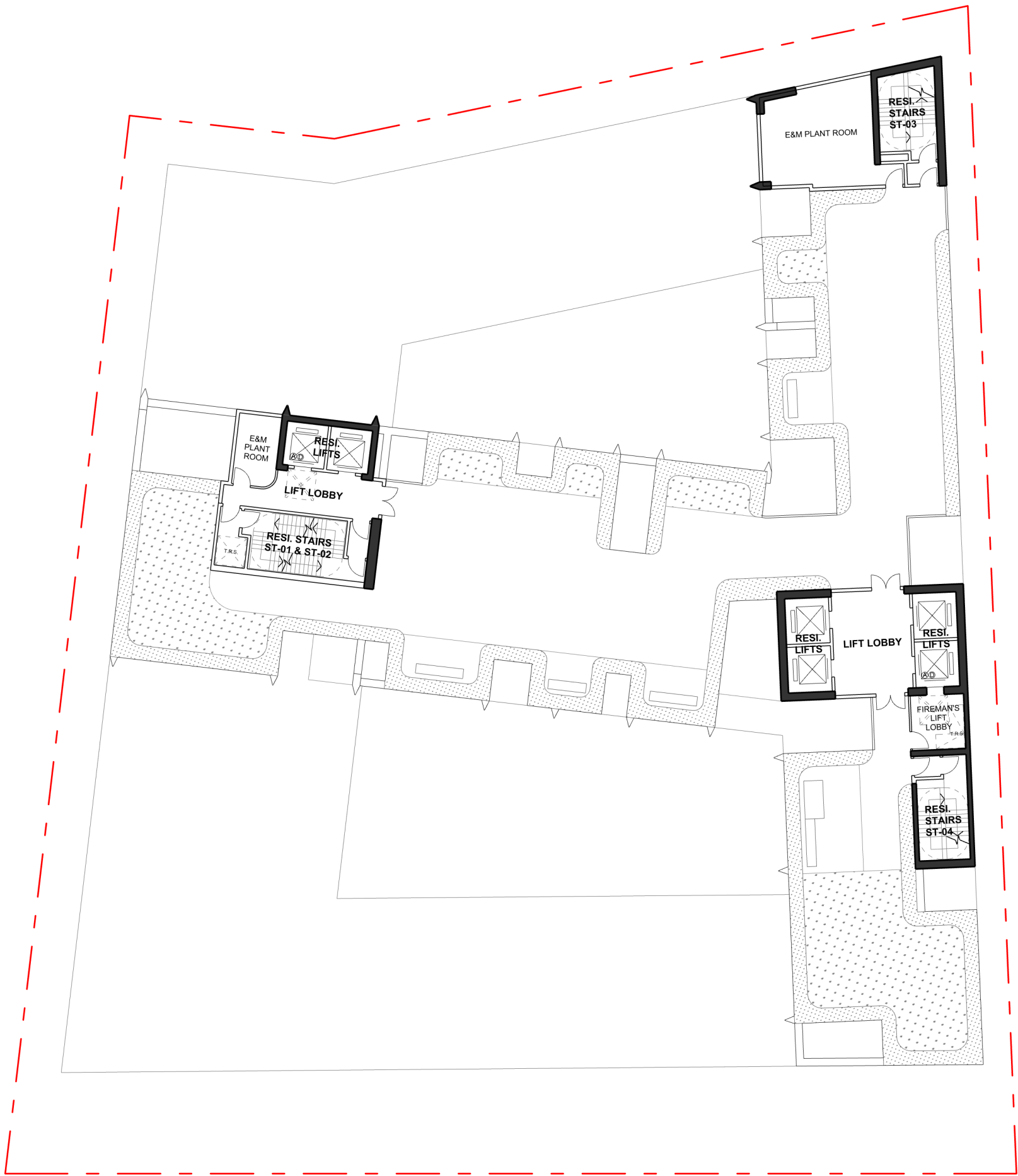
Project no: 22013

Project: Park Sun Building Redevelopment
Client: Kin Ying Co. Ltd.
Address: Wo Yi Hop Road, Kwai Chung
Hong Kong

Drawn: OC Scale: 1:250@A3

Title: 24-26/F Layout Plan

Sheet: Rev: -



Floor Level:
R/F: +130.00

GRASS
SHRUB

0 1 2 5 m
1:250 @A3

index
architecture
limited
Flat 12, 6/F,
Deco Industrial Centre,
12 Kut Shing Street, Chai Wan,
Hong Kong SAR
Tel: (852) 2155 1007
Fax: (852) 2155 1008
Email: info@indexarchitecture.com

FOR INFORMATION		
Issue	Description	Date
-	ISSUE	10-04-2024

ALL DRAWINGS AND WRITTEN
MATERIAL HEREIN CONSTITUTE
THE ORIGINAL AND UNPUBLISHED
WORK OF THE DESIGNER, AND
THE SAME WAY NOT BE
DUPLICATED, USED, OR
DISCLOSED WITHOUT THE WRITTEN
CONSENT OF THE DESIGNER.

ALL DIMENSION TO BE VERIFIED
BY CONTRACTOR

Project no: 22013
Project: Park Sun Building Redevelopment
Client: Kin Ying Co. Ltd.
Address: Wo Yi Hop Road, Kwai Chung
Hong Kong
Drawn: OC Scale: 1:250@A3
Title: Roof Layout Plan
Sheet: Rev: -



Flat 12, 6/F,
Decca Industrial Centre,
12 Kut Shing Street, Chai Wan,
Hong Kong SAR
Tel: (852) 2155 1007
Fax: (852) 2155 1008
Email: info@indexarchitecture.com

FOR INFORMATION

Issue	Description	Date
-	ISSUE	03-04-2024

ALL DRAWINGS AND WRITTEN MATERIAL HEREIN CONSTITUTE THE ORIGINAL AND UNPUBLISHED WORK OF THE DESIGNER, AND THE SAME WAY NOT BE DUPLICATED, USED, OR DISCLOSED WITHOUT THE WRITTEN CONSENT OF THE DESIGNER.

ALL DIMENSION TO BE VERIFIED
BY CONTRACTOR

Project no: 22013

Project Park Sun Building Redevelopment

Client: Kin Ying Co. Ltd.

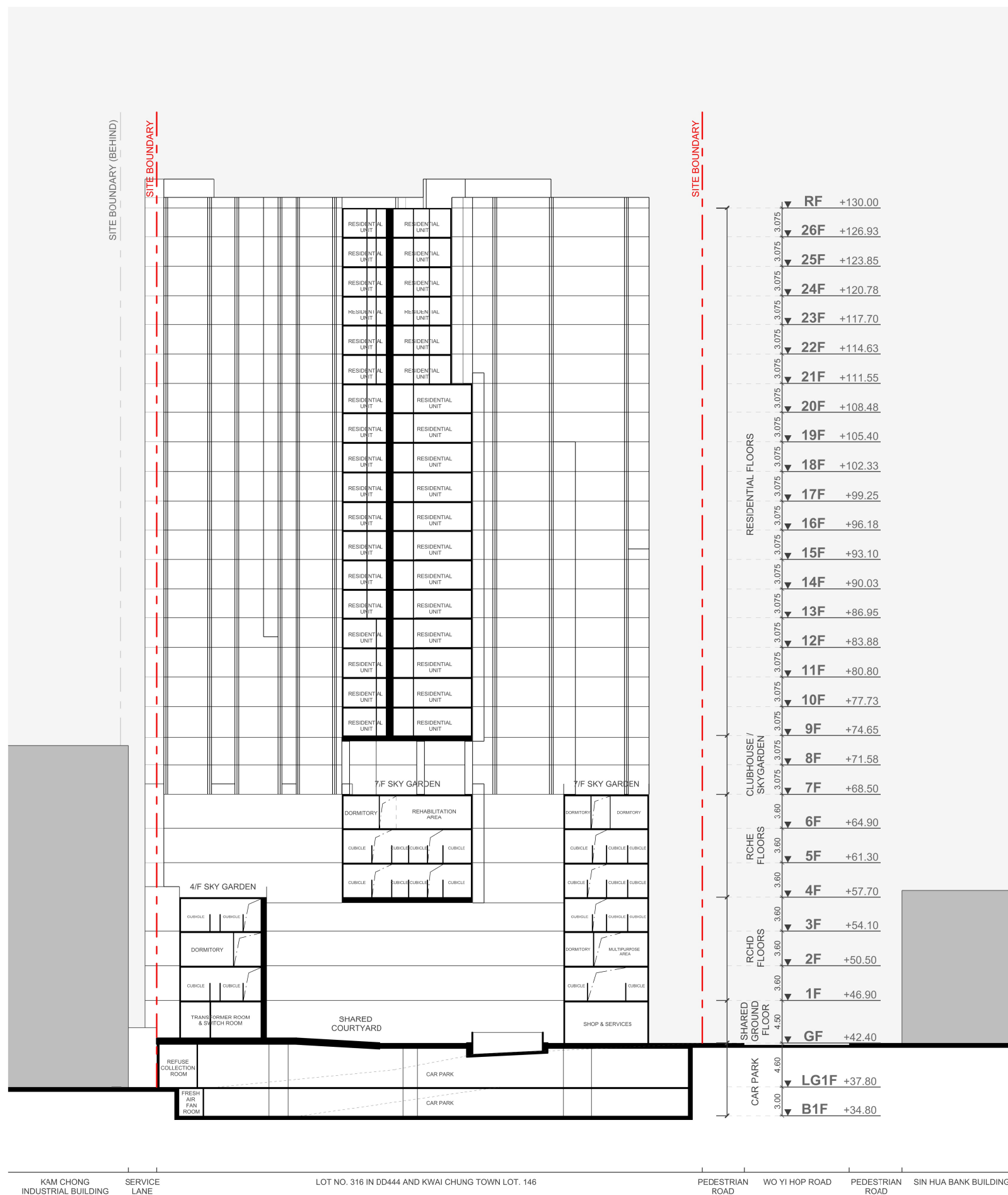
Address: Wo Yi Hop Road, Kwai Chung

Hong Kong

Drawn: OC Scale: 1:500@A3

Title: Section X-X

Sheet: Rev: -



SECTION X-X'

0 5 10m

1:500@A3



Flat 12, 6/F,
Decca Industrial Centre,
12 Kut Shing Street, Chai Wan,
Hong Kong SAR
Tel: (852) 2155 1007
Fax: (852) 2155 1008
Email: info@indexarchitecture.com

FOR INFORMATION

Issue	Description	Date
-	ISSUE	03-04-2024

ALL DRAWINGS AND WRITTEN MATERIAL HEREIN CONSTITUTE THE ORIGINAL AND UNPUBLISHED WORK OF THE DESIGNER, AND THE SAME WAY NOT BE DUPLICATED, USED, OR DISCLOSED WITHOUT THE WRITTEN CONSENT OF THE DESIGNER.

ALL DIMENSION TO BE VERIFIED
BY CONTRACTOR

Project no: 22013

Project Park Sun Building Redevelopment

Client: Kin Ying Co. Ltd.

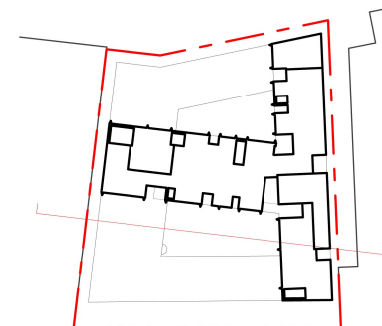
Address: Wo Yi Hop Road, Kwai Chung

Hong Kong

Drawn: OC Scale: 1:500@A3

Title: Section Y-Y'

Sheet: Rev:-



0 5 10m

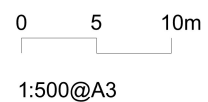
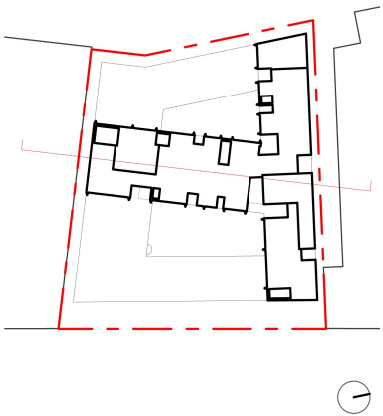
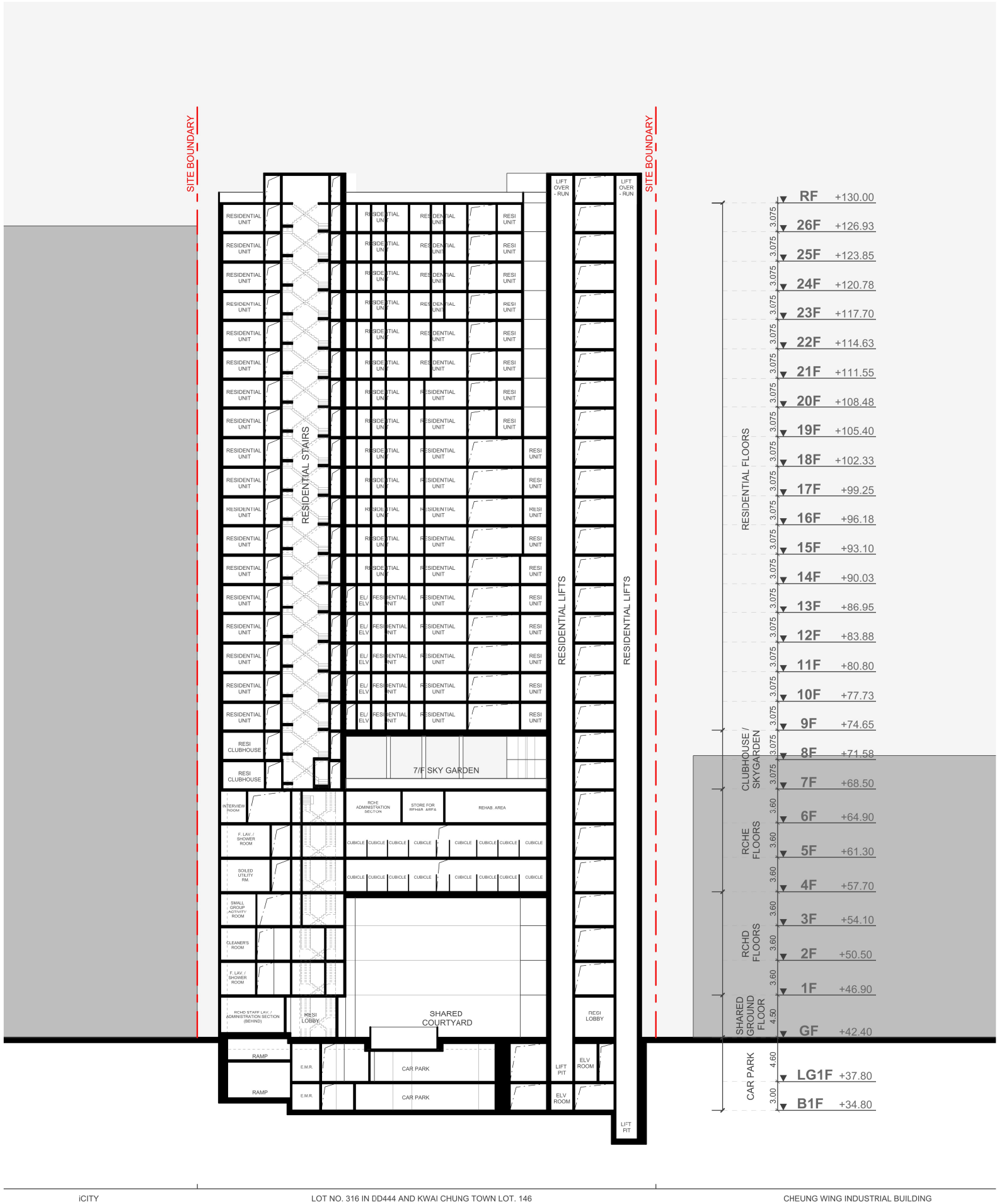
1:500@A3

iCITY

LOT NO. 316 IN DD444 AND KWAI CHUNG TOWN LOT. 146

CHEUNG WING INDUSTRIAL BUILDING

SECTION Y-Y'



index
architecture
limited

Fiat 12, 6/F,
Decca Industrial Centre,
12 Kut Shing Street, Chai Wan,
Hong Kong SAR
Tel: (852) 2155 1007
Fax: (852) 2155 1008
Email: info@indexarchitecture.com

FOR INFORMATION		
Issue	Description	Date
-	ISSUE	03-04-2024

ALL DRAWINGS AND WRITTEN
MATERIAL HEREIN CONSTITUTE
THE ORIGINAL AND UNPUBLISHED
WORK OF THE DESIGNER, AND
THE SAME WAY NOT BE
DUPLICATED, USED, OR
DISCLOSED WITHOUT THE WRITTEN
CONSENT OF THE DESIGNER.

ALL DIMENSION TO BE VERIFIED
BY CONTRACTOR

Project no: 22013

Project: Park Sun Building Redevelopment

Client: Kin Ying Co. Ltd.

Address: Wo Yi Hop Road, Kwai Chung
Hong Kong

Drawn: OC Scale: 1:500@A3

Title: Section Z-Z'

Sheet: Rev:-

SECTION Z-Z'

APPENDIX 2.1

SITE SURVEY RECORD

Appendix 2.1 – Site Survey Record

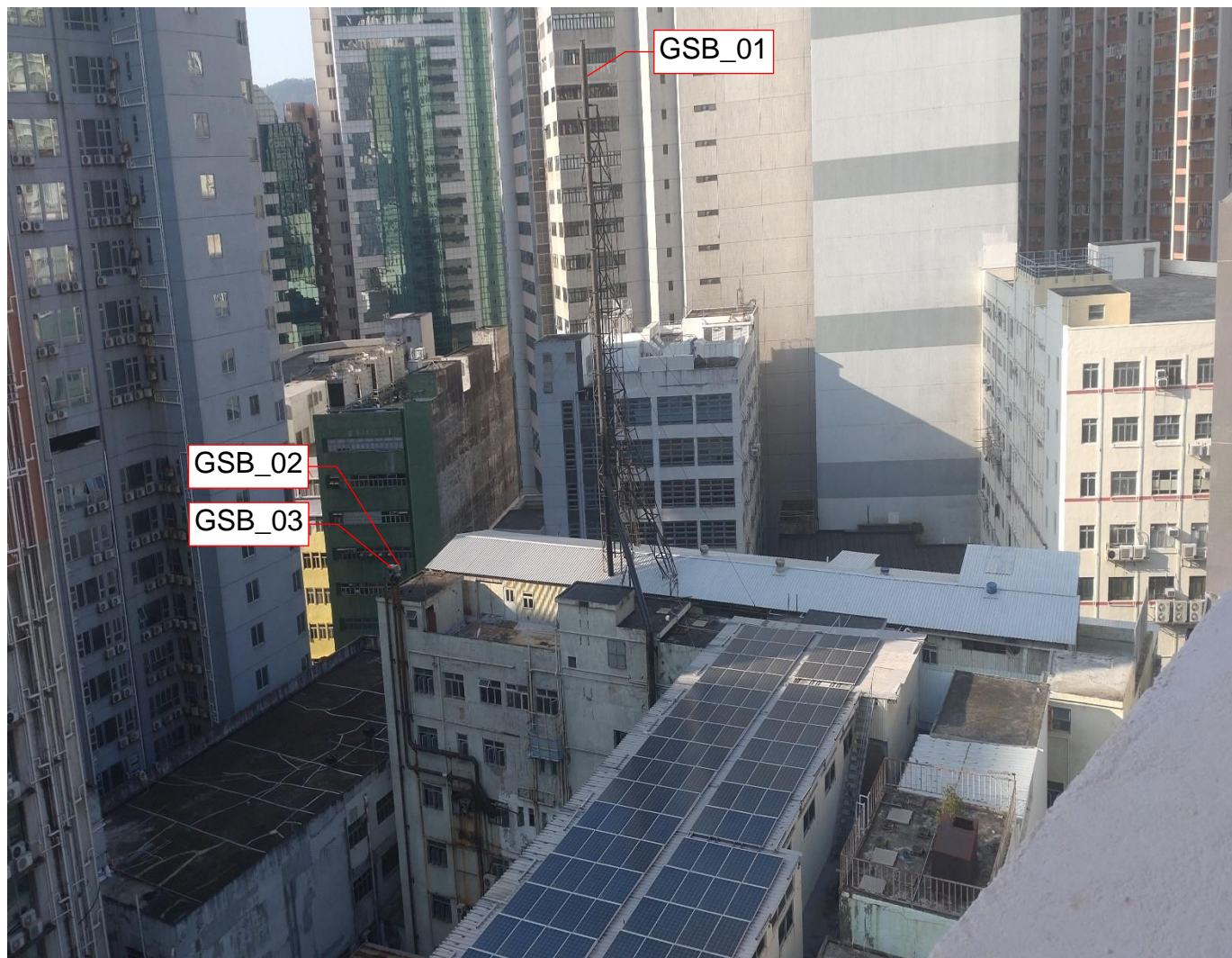


Photo 1: Industrial Chimneys at Golden Sunflower Building (GSB_01-03)

Appendix 2.1 – Site Survey Record



Photo 2: Industrial Chimney GSB_01 being abandoned

Appendix 2.1 – Site Survey Record

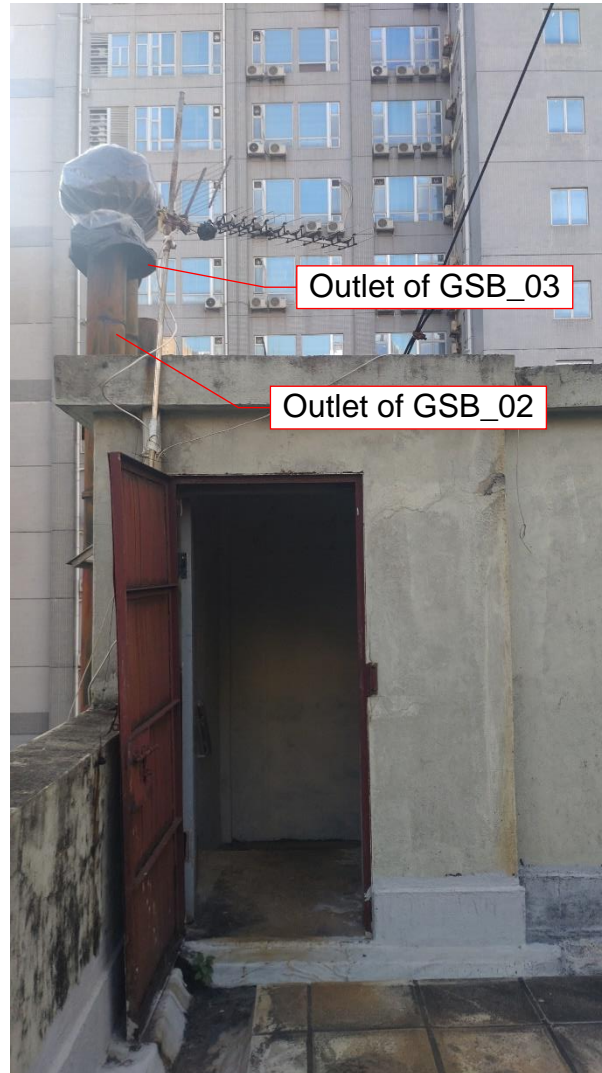
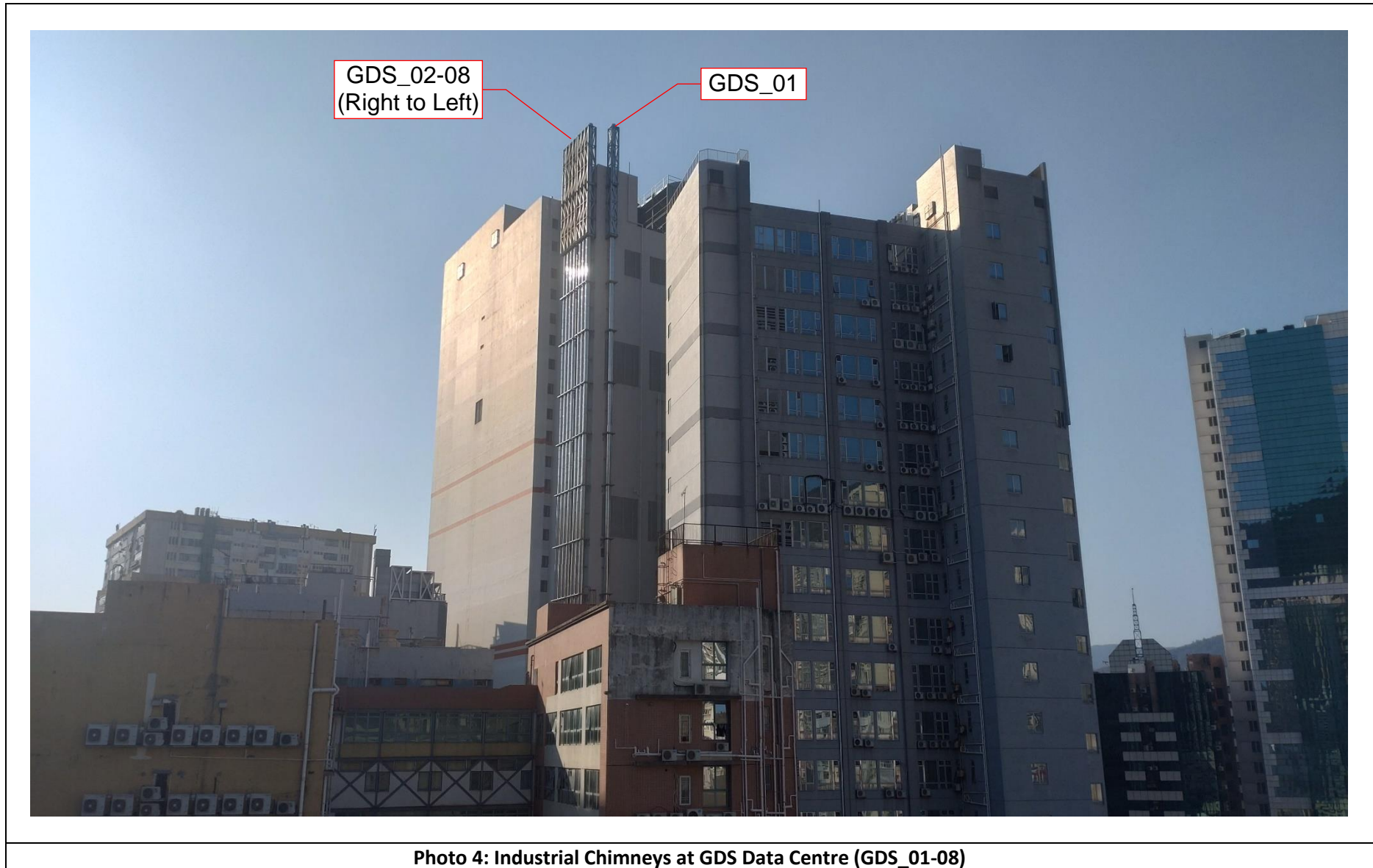


Photo 3: Industrial Chimneys GSB_02-03 being abandoned

Appendix 2.1 – Site Survey Record



Appendix 2.1 – Site Survey Record

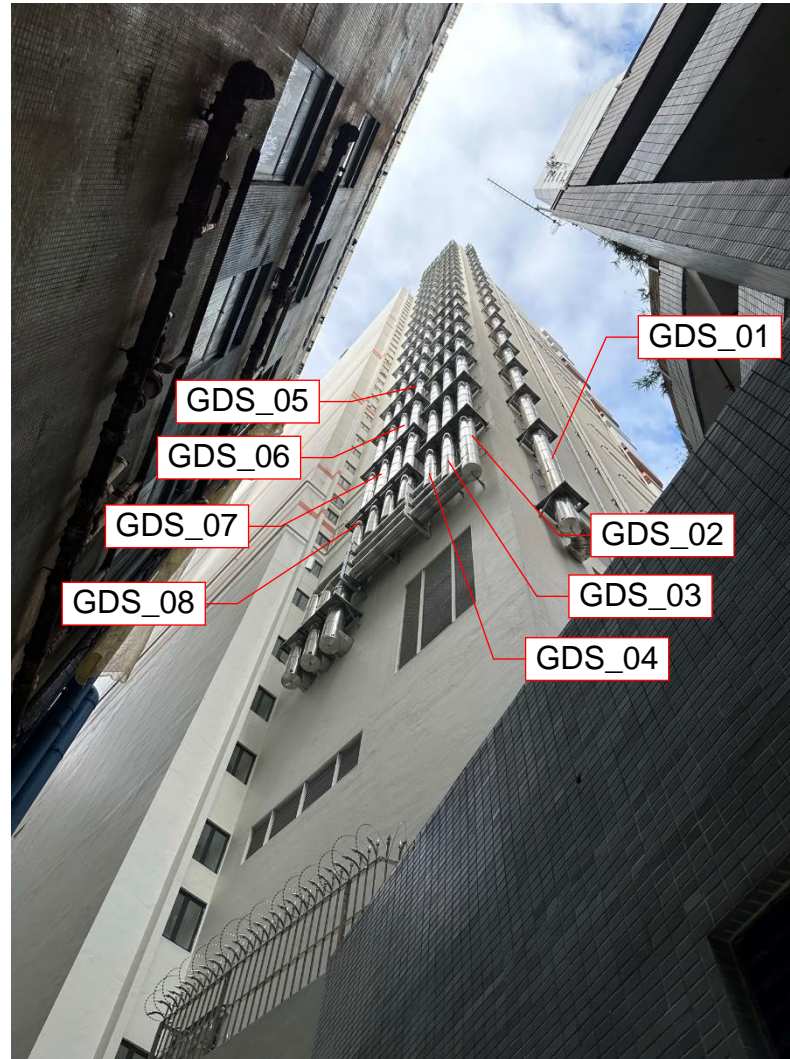


Photo 5: Industrial Chimneys at GDS Data Centre (GDS_01-08)

Appendix 2.1 – Site Survey Record

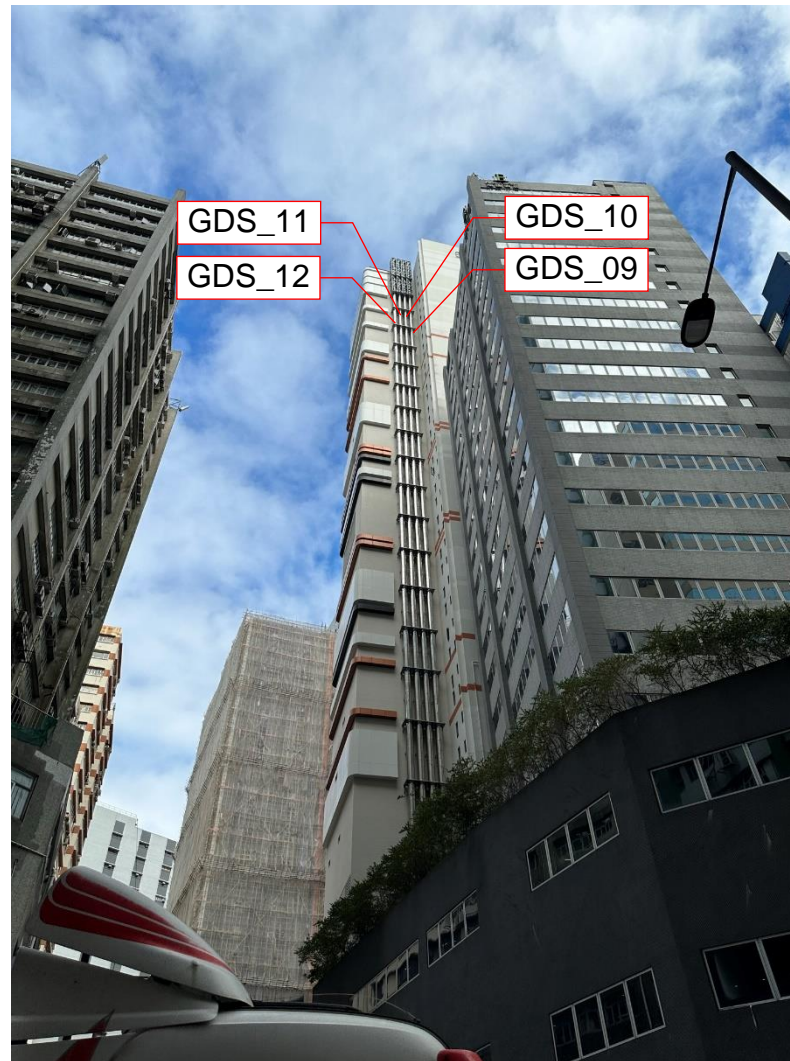


Photo 6: Industrial Chimneys at GDS Data Centre (GDS_09-12)

Appendix 2.1 – Site Survey Record



Photo 7: Industrial Chimney at Grand Industrial Building (GIB_01)

Appendix 2.1 – Site Survey Record

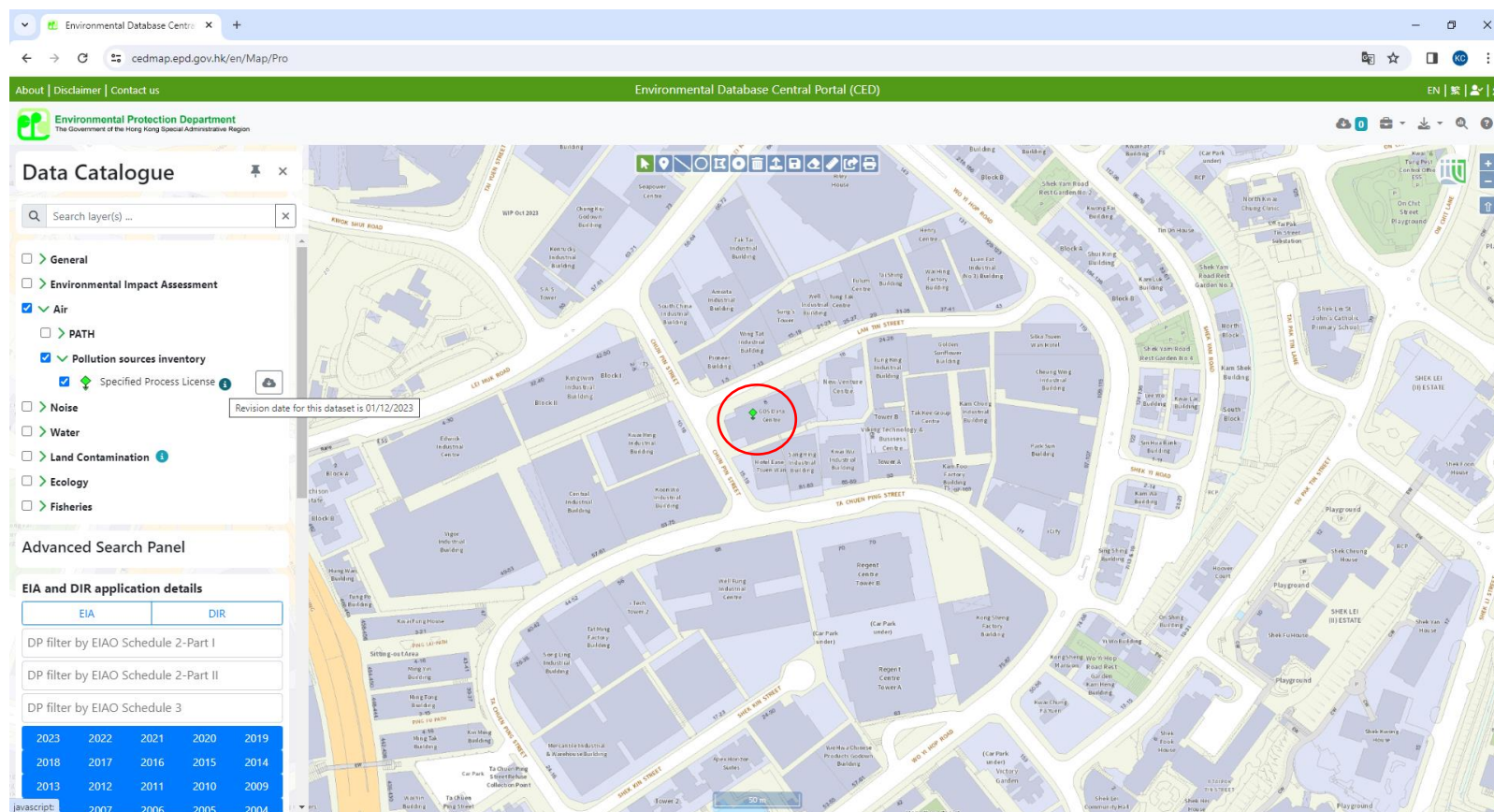


Photo 8: Industrial Chimneys at Tung Chun Soy and Canning Company (TCSCC_01-03)

APPENDIX 2.2

INFORMATION OF SPECIFIED PROCESS LICENSE L-7-065(1)

Appendix 2.2 – Information of Specified Process License L-7-065(1)



License No.	L-7-065(1)
License Holder	EDP I (HK) Limited
Address of Premises	2-16 Lam Tin Street, Kwai Chung, N.T.
Effective Date	6 March 2023
Expiry Date	5 March 2028
Specified Process involved	Electricity works
Remark: Information extracted from EPD's CED on 28 February 2024.	

申請書登記冊
依據《空氣污染管制條例》第 14(3)(a)條載備

編號： A0889

1. 申請的類別*

新領牌照

☒

牌照續期

☐

更改牌照

☐

轉讓牌照

☐

因根據第 21 條被終止豁免而所需的牌照

☐

取消或更改任何豁免條件或條款

☐

2. 申請人姓名 / 名稱 (英文) EDPI (HK) Limited

(中文)

3. 申請人地址 香港金鐘夏慤道 16 號遠東金融中心 25 樓 B 室

4. 申請日期 2022 年 1 月 13 日

5. 列入登記冊日期 2022 年 11 月 8 日

6. 在報章上刊登最後公告的日期 2022 年 12 月 日

* 在適當的格加“√”號

7. 進行指明工序的處所

處所名稱		地 址	電話號碼
中 文	英 文		
	GDS HK1 Data Centre	香港新界葵涌藍田街 2-16 號	37582429

8. 工程性質

現有牌照編號	有效期 屆滿日期	申請所指的指明工序的分類 †	操作方式 (連續式 / 間歇式)	裝置 / 處理 * 能力	筒倉容量 (只適用於 水泥工程)	排放點總數
--	--	電力工程	間歇式	40 兆瓦	--	21

9. 在同一處所內進行的其他指明工序

指明工序的分類 †	牌照編號 / 豁免文件編號 *
--	--

9A. 根據條例第 14A 條「空氣污染控制計劃」

甲. 有關之控制計劃已呈交 是 / 否 *

乙. 可供參閱 是 / 否 *

† 在條例附表 1 指定

* 刪去不適用者

10. 有害或厭惡性排放物 *

排放點編號	廢氣流率 (立方米/小時)		排往大氣的方式												處所 100 米範圍內的最高建築物／構築物			
			出口溫度 (攝氏)		逃逸性排放 (是 / 否)		排出或烟囱 高度 (米)		排出口或烟囱橫剖面									
									闊 (米)		長 (米)		直徑 (米)		距離 (米)		高度 (米)	
	1	2	1	2	1	2	1	2	1	2	1	2	1	2	1	2	1	2
EP1 to EP12	20880	--	485	--	否	--	159.12	--	--	--	--	--	0.55	--	68	--	123	--
EP13 to EP15	25560	--	560	--	否	--	113.15	--	--	--	--	--	0.55	--	68	--	123	--
EP16 to EP20	25560	--	560	--	否	--	129.50	--	--	--	--	--	0.55	--	68	--	123	--
EP21	11052	--	515	--	否	--	140.85	--	--	--	--	--	0.35	--	68	--	123	--

排放點編號	排 放 物 的 詳 細 資 料													
	成 分		排放率（公斤/小時）				控 制 設 備		每日平均 濃度 * （毫克/立方米）		最高濃度 * （毫克/立方米）		處於最高濃度的 期間 （小時/日）	
			平 均		最 高									
	1	2	1	2	1	2	1	2	1	2	1	2	1	2
EP1 to EP12	粒子 氮氧化物 一氧化碳 二氧化硫	--	0.0036 26.1 0.189 0.00755	--	0.0036 26.1 0.189 0.00755	--	烟囱	--	0.172 1250 9.05 0.362	--	0.172 1250 9.05 0.362	--	緊急用途	--
EP13 to EP15	粒子 氮氧化物 一氧化碳 二氧化硫	--	0.0044 35.8 0.277 0.00935	--	0.0044 35.8 0.277 0.00935	--	烟囱	--	0.172 1400 10.86 0.366	--	0.172 1400 10.86 0.366	--	緊急用途	--
EP16 to EP20	粒子 氮氧化物 一氧化碳 二氧化硫	--	0.0044 35.8 0.277 0.00935	--	0.0044 35.8 0.277 0.00935	--	烟囱	--	0.172 1400 10.86 0.366	--	0.172 1400 10.86 0.366	--	緊急用途	--
EP21	粒子 氮氧化物 一氧化碳 二氧化硫	--	0.0012 9.76 0.060 0.00346	--	0.0012 9.76 0.060 0.00346	--	烟囱	--	0.109 885.5 5.43 0.313	--	0.109 885.5 5.43 0.313	--	緊急用途	--

* 以處於標準溫度攝氏零度及 101.325 千帕斯的情況下計算。不得以稀釋空氣的方法來使排放率低於上限。

附註

任何人可在報章刊登公告的 30 天內，以有關地區的空氣質素指標正受到威脅為理由，或以有害或厭惡性排放物的排放會或相當可能會損害健康為理由，反對批准申請。反對書上須載有提出反對人士的姓名、地址及身分，用作進行所建議指明工序處所的地址，以及空氣質素指標正如何受到威脅或有害或厭惡性排放物的排放會如何導致健康受損。反對書應按《空氣污染管制（指明工序）規例》附表 2 表格 5 擬備，並呈交監督，副本則送交環境局局長。

**REGISTER OF APPLICATIONS UNDER SECTION 14(3)(a) OF
THE AIR POLLUTION CONTROL ORDINANCE**

Serial No.: A0889

1. Type of Application*

New Licence

☒

Renewal of Licence

☐

Variation of Licence

☐

Transfer of Licence

☐

A Licence subsequent to the Cessation of an Exemption under Section 21

☐

Cancellation or Variation of Any Term or Condition of Exemption

☐

2. Name of Applicant (English) EDPI (HK) Limited

(Chinese) _____

3. Address of Applicant Unit B, 25/F Far East Finance Centre, 16 Harcourt Road, Admiralty, Hong Kong

4. Date of Application 13 January 2022

5. Date of Entry into Register 8 November 2022

6. Date of Last Notice in Newspapers December 2022

* Tick the appropriate box

7. Premises Where the Specified Process is Conducted

Name of Premises		Address	Telephone No.
English	Chinese		
GDS HK1 Data Centre		2-16, Lam Tin Street, Kwai Chung, N.T. Hong Kong	37582429

8. Nature of Work

Existing Licence No.	Expiry Date	Classification of Specified Process† under Application	Mode of Operation (Continuous / Batch)	Installed Processing* Capacity	Silo Capacity (for Cement Works Only)	Total No. of Emission Points
--	--	Electricity Works	Batch	40 MW	--	21

9. Other Specified Processes Conducted in Same Premises

Classification of Specified Process †	Licence / Exemption* Numbers
--	--

9A. Air Pollution Control Plan under Section 14A

- a. Has the plan been submitted Yes / ~~No~~ *
- b. Whether the plan is available for inspection Yes / ~~No~~ *

† As specified in the Schedule 1 of the Ordinance

* Delete if not applicable

10. Noxious or Offensive Emissions *

Emission Point No	Exhaust Gas Flowrate (m³/h)		Mode of Discharge to Atmosphere												Highest Building / Structure within 100m of the Premises			
			Exit Temperature (°C)		Fugitive Emission (Yes /No)		Discharge or Chimney Height (m)		Cross-Section of Discharge Exit or Chimney									
									Width (m)		Length (m)		Diameter (m)		Distance (m)		Height (m)	
1	2	1	2	1	2	1	2	1	2	1	2	1	2	1	2	1	2	
EP1 to EP12	20880	--	485	--	No	--	159.12	--	--	--	--	--	0.55	--	68	--	123	--
EP13 to EP15	25560	--	560	--	No	--	113.15	--	--	--	--	--	0.55	--	68	--	123	--
EP16 to EP20	25560	--	560	--	No	--	129.50	--	--	--	--	--	0.55	--	68	--	123	--
EP21	11052	--	515	--	No	--	140.85	--	--	--	--	--	0.35	--	68	--	123	--

* Column 1 of each item refers to PROPOSED VALUE in the case of a new application or EXISTING VALUE if otherwise and column 2 refers to PROPOSED VARIATION

Emission Point No.	Details of Emissions													
	Composition		Emission Rate (kg/h)				Control Equipment		Average Daily Concentration* (mg/m ³)		Maximum Concentration* (mg/m ³)		Duration of Maximum Concentration (h/d)	
			Average		Maximum									
	1	2	1	2	1	2	1	2	1	2	1	2	1	2
EP1 to EP12	Particulate		0.0036		0.0036	--	Chimneys	--	0.172	--	0.172	--	Emergency Only	--
	Nitrogen Oxides	--	26.1	--	26.1	--			1250	--	1250	--		
	Carbon Monoxide		0.189		0.189				9.05		9.05			
	Sulphur Dioxide		0.00755		0.00755				0.362		0.362			
EP13 to EP15	Particulate		0.0044		0.0044	--	Chimneys	--	0.172	--	0.172	--	Emergency Only	--
	Nitrogen Oxides	--	35.8	--	35.8	--			1400	--	1400	--		
	Carbon Monoxide		0.277		0.277				10.86		10.86			
	Sulphur Dioxide		0.00935		0.00935				0.366		0.366			
EP16 to EP20	Particulate		0.0044		0.0044	--	Chimneys	--	0.172	--	0.172	--	Emergency Only	--
	Nitrogen Oxides	--	35.8	--	35.8	--			1400	--	1400	--		
	Carbon Monoxide		0.277		0.277				10.86		10.86			
	Sulphur Dioxide		0.00935		0.00935				0.366		0.366			
EP21	Particulate		0.0012		0.0012	--	Chimneys	--	0.109	--	0.109	--	Emergency Only	--
	Nitrogen Oxides	--	9.76	--	9.76	--			885.5	--	885.5	--		
	Carbon Monoxide		0.060		0.060				5.43		5.43			
	Sulphur Dioxide		0.00346		0.00346				0.313		0.313			

Expressed as at 0°C temperature and 101.325 kPa pressure.

11. Note
Any person may object within 30 days of notice in newspapers, to the granting of the application on the grounds that the Air Quality Objective in that area is being threatened or the emission of noxious or offensive emissions would be, or be likely to be, prejudicial to health. An objection requires the name, address, and identity of the person making the objection, the address of the premises of the proposed specified process, and how the Air Quality Objective is being threatened or how the emission of noxious or offensive emissions would cause prejudice to health. Objections should be made in Form 5 in the Second Schedule to the Air Pollution Control (Specified Processes) Regulations and be forwarded to the Authority and copied to the Secretary for the Environment.

牌照登記冊
依據《空氣污染管制條例》第 15 條
批給的牌照以進行指明工序

編號：.....L0519.....

牌照號碼：.....L-7-065(1).....

1. 牌照詳細資料

發出日期	有效期至	申請日期	申請編號	擬續期牌照(如有)編號
2023年3月7日	2028年3月6日	2022年1月13日	A0889	
牌照持有人姓名 (先寫姓氏) / 名稱			商業登記 / 公司註冊證書* 號碼	
中文	英文			
李國華	LI Kwok Wah (EDPI (HK) Limited)	身分證號碼：G695 69568354-000-06-22-1		
擬進行指明工序的處所的名稱				
--- (GDS HK1)				
擬進行指明工序的處所的地址				
新界葵涌藍田街 2-16 號				
指明工序的分類 [†]	裝置/處理*能力	筒倉容量 (只適用於水泥工程)		
電力工程	40.0 兆瓦			

*刪去不適用者

†在條例附表 1 指定

2. 持牌期間牌照更改情況

申請日期	申請的批給日期

3. 持牌期間牌照轉讓情況

申請日期	申請的批給日期	受讓人姓名(先寫姓氏)/ 名稱		受讓人的商業登記 / 公司註冊證書 * 號碼
		中文	英文	

4. 取消牌照

取消日期.....

*刪去不適用者

**REGISTER OF LICENCES FOR THE CONDUCT OF A SPECIFIED PROCESS
GRANTED UNDER SECTION 15 OF THE AIR POLLUTION CONTROL ORDINANCE**

Serial No. : **L0519**

Licence No. : **L-7-065(1)**

1. Details of the Licence

Date of Issue	Date of Expiry	Date of Application	Serial No. of the Application	Serial No. of the Licence (if any) being Renewed
07 March 2023	06 March 2028	13 January 2022	A0889	
Name of Licence Holder (Surname First)			Business Registration / Certificate of Incorporation * No.	
English	Chinese			
LI Kwok Wah (EDPI (HK) Limited)	李國華	HKID No.:G695 69568354-000-06-22-1		
Name of the Premises where the Specified Process is conducted				
GDS HK1				
Address of the Premises where the Specified Process is conducted				
No. 2-16 Lam Tin Street, Kwai Chung, N.T.				
Classification of Specified Process †	Installed / Processing* Capacity	Silo Capacity (for Cement Works Only)		
Electricity Works	40.0 MW			

* Delete if not applicable

† As specified in the First Schedule of the Ordinance

2. Variation(s) of the Licence during the Licensing Period

Date of Application	Date of Grant of Application

3. Transfer(s) of the Licence during the Licensing Period

Date of Application	Date of Grant of Application	Name of the Transferee (Surname First)		Business Registration / Certificate of Incorporation * No. of the Transferee
		English	Chinese	

4. Cancellation of the Licence.

Date of Cancellation

* Delete if not applicable

APPENDIX 4.1

EXTRACT FROM ANNUAL TRAFFIC CENSUS 2023

Appendix B - AADT of Counting Stations - ordered by Station Nos.

Stn. No.	Stn. Type	Road Type	Road Name	From	To	AADT		Change of 2023 as % of 2022
						2022	2023	
5220	C	DD	Kwai Chung INT ramps E & F	Kwai Chung Rd	Lai King Hill Rd INT	14,090 *	13,790	-2.2
5221	C	DD	Cheung Wing Rd	Wo Yi Hop Rd	Kwai Chung Rd RA	44,470 *	38,270	-14.0
5222	C	DD	Tai Wo Hau Rd	Texaco Rd	Tai Ha St eastern junction	17,560 *	17,080	-2.7
5223	C	DD	Kwai Yik Rd	Kwai Chung Rd	Hing Fong Rd	21,120 *	23,110	+9.4
5224	C	DD	Kwai Fuk Rd	Shing Fuk St	Texaco Rd	15,640 *	15,680	+0.2
5225	C	DD	Wo Yi Hop Rd	Tai Loong St	Lei Muk Rd	14,300 *	16,910	+18.3
5226	C	DD	Lei Muk Rd	Wo Yi Hop Rd	Chun Pin St	7,420 *	6,330	-14.6
5227	C	DD	Sha Tsui Rd	Pun Shan St	Tso Kung St	19,610 *	17,430	-11.1
5228	C	DD	Chung On St	Sha Tsui Rd	Yeung Uk Rd	10,300 *	9,820	-4.6
5229	C	DD	Tai Ho Rd (GL)	Castle Peak Rd - Tsuen Wan	Hoi Pa St	25,670 *	22,080	-14.0
5230	C	DD	Ma Tau Pa Rd & Texaco Rd	Yeung Uk Rd	Texaco Rd RA	15,000 *	16,360	+9.0
5231	C	DD	Texaco Rd	Texaco Rd N	Tsuen Fu St	45,460 *	52,430	+15.3
5232	C	DD	Tsing Yi Rd	Tsing Yi Heung Sze Wui Rd	Ching Hong Rd	21,140 *	21,060	-0.3
5233	C	DD	Fung Cheung Rd	Castle Peak Rd - Yuen Long	Hop Yick Rd	23,470 *	23,230	-1.0
5234	C	DD	Ma Miu Rd	Yuen Long On Ning Rd	Ma Wang Rd	15,670 *	16,800	+7.2
5235	C	DD	Kuk Ting St	Castle Peak Rd - Yuen Long	Sai Tai St	10,550 *	9,260	-12.2
5236	C	DD	Castle Peak Rd - Ping Shan	Yuen Long Tai Yuk Rd	Ma Wang Rd	19,820 *	20,590	+3.9
5237	C	DD	Ming Kum Rd	Pui To Rd	Shek Pai Tau Rd	14,170 *	17,930	+26.5
5238	C	DD	Tuen Mun Heung Sze Wui Rd	Pui To Rd	Tuen Hing Rd	30,950 *	38,830	+25.5
5239	C	PD	Castle Peak Rd - San Hui	Tuen Mun Heung Sze Wui Rd	Tseng Choi St	11,090 *	12,870	+16.0
5240	C	DD	Pui To Rd	Tsun Wen Rd	Ming Kum Rd	15,450 *	18,860	+22.1
5241	C	DD	Ngan Shing St	Siu Lek Yuen Rd	Chap Wai Kon St	14,280 *	16,810	+17.7
5242	C	DD	Sha Kok St	Tai Chung Kiu Rd	Sha Tin Wai Rd	12,380 *	11,840	-4.4
5243	C	DD	Ting Kok Rd	Nam Wan Rd	Tai Po Tai Wo Rd	18,260 *	21,420	+17.3
5244	C	DD	San Wan Rd	Sha Tau Kok Rd	So Kwun Po INT	12,780 *	13,900	+8.8
5245	C	DD	Po Lam Rd N	Po Hong Rd	Tsui Lam Rd	15,800 *	12,830	-18.8
5246	C	DD	On Kui St	Lok Yip Rd	Sha Tau Kok Rd - Lung Yuek Tau	6,690 *	7,760	+15.9
5247	C	DD	Tsing Yi Rd W	Fung Shue Wo Rd	Tam Kon Shan INT	34,690 *	27,700	-20.2
5248	C	LD	Kwai Shing Circuit & Shing Fuk St	Kwai Luen Rd	Kwai Fuk Rd	13,460 *	15,760	+17.0
5249	C	LD	Tai Ho Rd	Yeung Uk Rd	Tsuen Wan Ferry Pier	13,600 *	19,430	+43.0
5250	C	LD	Fung Shue Wo Rd	Tsing Yu St	Tsing Yi Rd W	15,220 *	15,530	+2.0

* AADT estimated by Growth Factor